



Devonshire
Preschool

2025-2026

Registration Information

REGISTRATION IS
BY APPOINTMENT STARTING
MARCH 10 (R)
MARCH 17 (NR)

School year runs from September 2–
May 22 and follows a calendar similar to
the area public schools.

Children must be toilet-trained for the
3s and 4s classrooms.

We are peanut and tree nut free.

Devonshire Preschool is licensed by the
Illinois Department of Children and
Family Services.

Aging date is September 1, 2025.

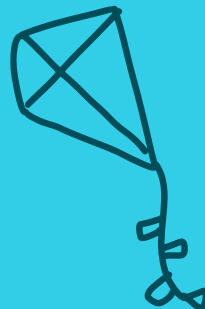
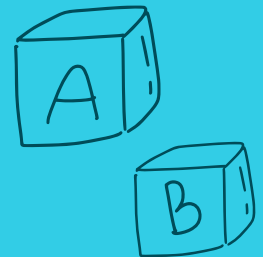
CONTACT US NOW!

Haley Carr
Preschool Director
Early Childhood Supervisor
☎ 847-929-7444
hcarr@skokieparks.org

About Devonshire Preschool

Skokie's Devonshire Preschool is an arts-
focused program offering state-of-the-art
classrooms for children ages two to four.
We implement a play-based,
developmentally-appropriate curriculum
that fosters each child's social, emotional,
language, physical and intellectual growth.
Teachers with early childhood education
degrees plan activities around a weekly
theme.

Extended-day enrichment programs are
offered in the program.



Devonshire Cultural Center

☎ 847-674-1500 ext 2400

4400 Greenwood Street
Skokie, IL 60076



Tuition Information

Tuition is billed as 9 monthly payments of the listed resident/non-resident rate. \$100 registration fee applies.

Registration is by appointment (email hcarr@skokieparks.org) beginning March 10 for Skokie residents (March 17 NR).

Applications available at the front desk.

2s

Preschool

MWF 9 - 11 a.m. \$300/375

Enrichment

Extended Day:

MWF 11 a.m. - 12 p.m. \$148/185

Little Learners:

T/Th 9 - 11 a.m. OR

11:30 a.m. - 1:30 p.m.

Seasonal program for age 2.5-3.5



Preschool Features

Outdoor Playground

Indoor Gymnasium

Dance Studio

Kitchen*

*lunch provided for 4s full-day class

3s

Preschool

MWF 9 a.m. - 12 p.m. \$295/369

T/Th 9 a.m. - 12 p.m. \$197/246

M-F 9 a.m. - 12 p.m. \$492/615

Enrichment

MWF 12 - 2 p.m. \$250/313

T/Th 12 - 2 p.m. \$174/218

M-F 12 - 2 p.m. \$312/390

4s

Preschool

M-F 9 a.m. - 12 p.m. \$492/615

M-Th 9 a.m. - 12 p.m. \$393/491

M-F 9 a.m. - 3:30 p.m. \$890/1112

Enrichment

M-Th 12 - 2 p.m. \$277/346

M-F 12 - 2 p.m. \$312/390

Enrichment Details

Extend your child's preschool day from 12-2! Preschoolers eat a packed lunch and participate in our rotating seasonal enrichment classes, such as Awesome Autumn, Goop, Stories Come Alive, Wiggle It & Jiggle It, and more!