

SKOKIE PARK DISTRICT

# SUMMER CAMP 2017



Registration begins January 29



**Reminder: Registration By Age**

Your child's summer camp enrollment will be based on age. Ages listed under each camp refer to the age of the child as of Sept. 1, 2017, unless otherwise noted.

**Double Check Your Account**

Save yourself time and prevent any errors on camp registration day. Stop by any park district facility prior to camp registration and establish a household in our database or if you are already enrolled, update your household information. Staff will double check your camper's grade and age and make sure that you know your WebTrac login and password. See page 26 for more registration details.

**Table of Contents**

**General Information** ..... 1, 24

**Bus Information** ..... 2

**Map & Registration** ..... 25-28

**Camps by Age** ..... 29

**Arts** ..... 5-7

**District 219 STEM** ..... 12

**Early Childhood** ..... 8-9

**Extended Camps** ..... 3-4

**General Camps** ..... 13

**Nature** ..... 10-11

**Play-Well TEK** ..... 15

**Special Interest** ..... 14

**Special Recreation** ..... 12

**Sports** ..... 16-21

**Teens** ..... 22-23



**Thank You!**

The Skokie Park District would like to extend a sincere thanks to the Skokie Public Library, as well as School Districts 65, 68, 69 and 72 for the use of their facilities for camp sites and rain locations.



## Save the Date

### Wednesday, January 25, 2017 — 6-7 p.m.

Camp Open House:  
Oakton Community Center

### Sunday, January 29, 2017, 12 p.m.

Resident registration begins  
Walk-in registration at the following facilities:  
Devonshire Cultural Center  
Emily Oaks Nature Center  
Oakton Community Center  
Weber Leisure Center

### Wednesday, February 22, 2017

Non-resident registration begins

### Friday, March 31, 2017

First camp payment due

### Monday, April 10, 2017

First auto-debit payment

### Friday, April 28, 2017

Final camp payment due

### Wednesday, May 10, 2017

Final auto-debit payment

### Monday, June 12, 2017

Most camps begin—Session I

### Tuesday, July 4, 2017

No camp—Independence Day

### Friday, July 7, 2017

Last day of camp—Session I

### Monday, July 10, 2017

Most camps begin—Session II

### Friday, August 4, 2017

Last day of camp—Session II

### Monday, August 7, 2017

Summer's End & Final camp Fling begin

## Camp Questions (847) 674-1500

### Mary Amato—ext. 2710

ACA Accreditation  
North End Camp  
Summer's End

### Jennifer Bever—ext. 3510

BLAST Fun Fit

### Kathy Day—ext. 2425

Little Travelers  
World Travelers

### Bob DeLeonardis—ext. 2183

All-American Basketball Academy  
Brazilian Soccer  
Challenger British Soccer Camp  
Chicago Storm Soccer Camp  
Football Camp  
Tennis Camps  
Windy City Rage Softball Camp  
Wrestling Camp

### Nancy Eschker, CPRP—ext. 2742

ACA Accreditation  
Camp Iwannago  
Devonshire Extended Camp  
Oakton Extended Camp

### Jill Flaherty—ext. 2525

Earth Explorers  
Earth Rangers  
Earth Travelers

### Steve Glickman—ext. 2926

Summerstars Hockey Camp

### Lee Hansen—ext. 2520

Outdoor Challenge Camp

### Amanda Hanson, CPRP—ext. 3020

Historical Explorers  
Historical Travelers

### Robin Horwitz, CPRE—ext. 2420

Summer on Broadway Sr./Jr./Teen  
Behind the Scenes

### Rich Lee—ext. 3120

Junior Golf Clinics

### Kim Reynolds—ext. 3511

Central Park Camp  
Lil' Campers  
Weber Extended

### Kelly Davidson—ext. 2741

Jr. Aquatics Camp  
Aquatics Camp

### Erin Peterson—ext. 2540

Little Earth Scouts

### Breanne Schnoor—ext. 3505

Elementary Sports Camp  
Final Camp Fling  
Hot Shot Sports Mini Camps  
Indoor Sports Camp  
Middle School Sports Camp

### Lisa Sullivan, CPRP—ext. 2725

CIT I/II  
Urban Adventures  
X-Camp

### Crystal VanHying, CPRP—ext. 2720

Bus Transportation  
Chess Camp

### Caryn Watson, APRP—ext. 2410

Camp Amigos  
Circus Camp Sr./Jr./Apprentices  
Dance Intensive Art Camp  
Kids Cooking Camp Sr./Jr.  
Play Well TEK Camps

### Pamela Zeid, CPRP—ext. 2715

Camp Art!  
Happy Campers

### Board of Park Commissioners

Jerry Clarito, President  
Michael Alter, Vice-President  
Susan Aberman, Commissioner  
Mike Reid, Commissioner  
Maureen Yanes, Commissioner

### Administrative Staff

John Ohrlund, CPRP, Executive Director  
Michelle Tuft, CPRE, Superintendent of Recreation & Facilities  
Jon Marquardt, CPRP, Assistant Superintendent of Recreation  
Mike Rea, APRP, Superintendent of Parks  
William Schmidt, CPA, MBA, Superintendent of Business Services

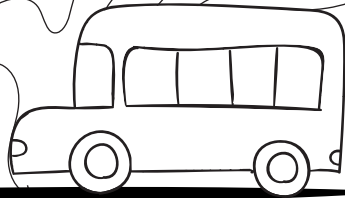
### Camp Guide Production

Rachel Pogner, Graphic Designer  
Scott Walker, Graphic Designer  
Jim Bottorff, Marketing Manager





# BUS



## Camp Bus Transportation

Home pick-up/drop-off is available at an additional fee for campers attending the following camps:

- |                                 |                                       |
|---------------------------------|---------------------------------------|
| Aquatics Camp (Sr. only)        | Earth Rangers                         |
| Behind the Scenes               | Elementary Sports Camp                |
| Camp Art!                       | Indoor Sports Camp                    |
| Camp Iwannago                   | Kids Cooking Camp Jr./Sr./Apprentices |
| Central Park Camp               | Middle School Sports Camp             |
| Circus Camp Jr./Sr./Apprentices | North End Camp                        |
| CIT (except Happy Campers)      | Summer on Broadway Jr./Sr./Teen       |
| Earth Explorers                 | X-Camp                                |
| Earth Travelers                 | World Travelers                       |



Please note the following important information:

- Bus transportation is only available for residents of zip codes 60076, 60077 and 60203.
- Campers are picked up in front of their house, switch buses at Devonshire Park, and are dropped off at their camp site.
- Two camp counselors are on each bus to monitor the campers.
- Pick up may begin as early as 8:30 a.m.; drop off is no later than 4:30 p.m.
- Bus routes are created per 4-week session; discounts are not available for **1-week** camps.
- Detailed bus information is emailed 1 week before the camp session begins.
- Please refer to the Camp Refund Policy for refund information regarding Camp Bus Transportation.

Registration Deadline: May 7 (for session 1)  
June 11 (for session 2)

Icon indicates bus transportation is available.



Age: 5 - 15

**AM & PM**

<b>222781-01</b>	M-F	6/12-7/7	8:30A-4:30P	\$190/\$190
<b>222781-02</b>	M-F	7/10-8/4	8:30A-4:30P	\$200/\$200

**AM Only**

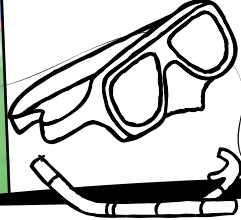
<b>222781-03</b>	M-F	6/12-7/7	8:30-9:30A	\$109/\$109
<b>222781-04</b>	M-F	7/10-8/4	8:30-9:30A	\$115/\$115

**PM Only**

<b>222781-05</b>	M-F	6/12-7/7	3:30-4:30P	\$109/\$109
<b>222781-06</b>	M-F	7/10-8/4	3:30-4:30P	\$115/\$115







# EXTENDED

## Late Summer Camps



### Final Camp Fling



Wrap up summer with a Final Camp Fling; campers will have a blast as they participate in various theme days and field trips. Register for your favorite theme day, or sign up for them all! Pick-up and drop off at the Weber Center M/W/F, Devonshire Center on Tuesday, and Emily Oaks on Thursday. Bring a lunch and water bottle daily.

Age: 5 - 14 Location: Weber Leisure Center

#### Summer Olympics

220539-04 M 8/7 8:30A-4:30P \$30/\$38

#### Sous Chef & Devonshire Pool

220539-05 Tu 8/8 8:30A-4:30P \$30/\$38

#### Craft Bonanza

220539-06 W 8/9 8:30A-4:30P \$30/\$38

#### Park Ranger & Mini Golf

220539-07 Th 8/10 8:30A-4:30P \$30/\$38

#### Recess

220539-08 F 8/11 8:30A-4:30P \$30/\$38

#### Winter Olympics

220539-09 M 8/14 8:30A-4:30P \$30/\$38

#### Sous Chef & Wilmette Beach

220539-10 Tu 8/15 8:30A-4:30P \$30/\$38

#### Throwback

220539-11 W 8/16 8:30A-4:30P \$30/\$38

#### Park Ranger and Foot Golf

220539-12 Th 8/17 8:30A-4:30P \$30/\$38

#### Carnival

220539-13 F 8/18 8:30A-4:30P \$30/\$38

#### Week 1

220539-01 M-F 8/7-8/11 8:30A-4:30P \$150/\$190

#### Week 2

220539-02 M-F 8/14-8/18 8:30A-4:30P \$150/\$190

#### Week 1 & 2

220539-03 M-F 8/7-8/18 8:30A-4:30P \$300/\$380

### Summer's End

End the summer with one more camp! Campers will be on the listed field trips from 8:30-4:30. Bring a lunch and snack daily.

Age: 5 - 14 Location: Oakton Park

#### Hollywood Fun Park

220534-01 M 8/7 7A-6P \$45/\$56

#### Cypress Cove Waterpark

220534-02 Tu 8/8 7A-6P \$45/\$56

#### Shedd Aquarium

220534-03 W 8/9 7A-6P \$45/\$56

#### Santa's Village

220534-04 Th 8/10 7A-6P \$45/\$56

#### Movie Theater

220534-05 F 8/11 7A-6P \$45/\$56

#### Chicago Children's Museum & Navy Pier

220534-06 M 8/14 7A-6P \$45/\$56

#### Brookfield Zoo

220534-07 Tu 8/15 7A-6P \$45/\$56

#### Movie Theater

220534-08 W 8/16 7A-6P \$45/\$56

#### Barefoot Bay Waterpark

220534-09 Th 8/17 7A-6P \$45/\$56

#### Adventure Realm

220534-10 F 8/18 7A-6P \$45/\$56





# EXTENDED

## Early AM & Late PM Camps

Campers who attend a full day camp (9:30 a.m.–3:30 p.m.) are eligible to register for this unique program that allows children to attend an early morning or late afternoon camp, depending on their needs. Bus transportation is provided to transfer campers to and from their day camp and extended camp. Campers must be registered for a full day camp in order to be accepted to this camp. Campers are required to bring in their own snack daily. Please refer to individual camp descriptions for specific information. Campers do not swim at Extended Camps. No Camp July 4.

Age: 5 – 11



### Devonshire

<b>4 Week AM</b>					
<b>220533-01</b>	M-F	6/12-7/7	7-9:30A	\$138/\$173	
<b>220533-02</b>	M-F	7/10-8/4	7-9:30A	\$145/\$181	
<b>1 Week AM</b>					
<b>220533-05</b>	M-F	6/12-6/16	7-9:30A	\$40/\$50	
<b>220533-06</b>	M-F	6/19-6/23	7-9:30A	\$40/\$50	
<b>220533-07</b>	M-F	6/26-6/30	7-9:30A	\$40/\$50	
<b>220533-08</b>	M,W-F	7/3-7/7	7-9:30A	\$32/\$40	
<b>220533-09</b>	M-F	7/10-7/14	7-9:30A	\$40/\$50	
<b>220533-10</b>	M-F	7/17-7/21	7-9:30A	\$40/\$50	
<b>220533-11</b>	M-F	7/24-7/28	7-9:30A	\$40/\$50	
<b>220533-12</b>	M-F	7/31-8/4	7-9:30A	\$40/\$50	

<b>4 Week PM</b>					
<b>220533-03</b>	M-F	6/12-7/7	3:30-6P	\$138/\$173	
<b>220533-04</b>	M-F	7/10-8/4	3:30-6P	\$145/\$181	
<b>1 Week PM</b>					
<b>220533-13</b>	M-F	6/12-6/16	3:30-6P	\$40/\$50	
<b>220533-14</b>	M-F	6/19-6/23	3:30-6P	\$40/\$50	
<b>220533-15</b>	M-F	6/27-6/30	3:30-6P	\$40/\$50	
<b>220533-16</b>	M,W-F	7/3-7/7	3:30-6P	\$32/\$40	
<b>220533-17</b>	M-F	7/10-7/14	3:30-6P	\$40/\$50	
<b>220533-18</b>	M-F	7/17-7/21	3:30-6P	\$40/\$50	
<b>220533-19</b>	M-F	7/24-7/28	3:30-6P	\$40/\$50	
<b>220533-20</b>	M-F	7/31-8/4	3:30-6P	\$40/\$50	

### Oakton

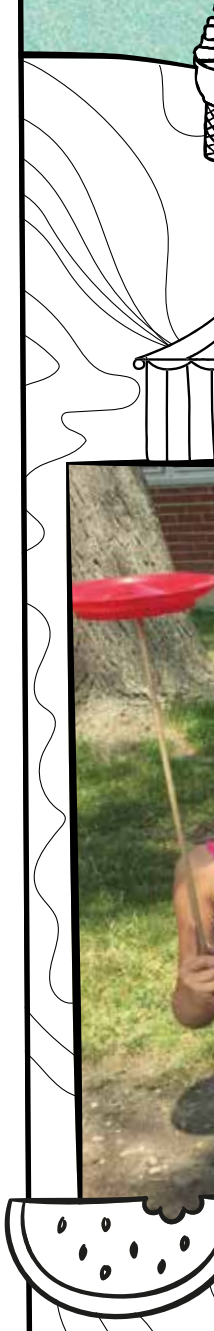
<b>4 Week AM</b>					
<b>220538-01</b>	M-F	6/12-7/7	7-9:30A	\$138/\$173	
<b>220538-02</b>	M-F	7/10-8/4	7-9:30A	\$145/\$181	
<b>1 Week AM</b>					
<b>220538-05</b>	M-F	6/12-6/16	7-9:30A	\$40/\$50	
<b>220538-06</b>	M-F	6/19-6/23	7-9:30A	\$40/\$50	
<b>220538-07</b>	M-F	6/26-6/30	7-9:30A	\$40/\$50	
<b>220538-08</b>	M,W-F	7/3-7/7	7-9:30A	\$32/\$40	
<b>220538-09</b>	M-F	7/10-7/14	7-9:30A	\$40/\$50	
<b>220538-10</b>	M-F	7/17-7/21	7-9:30A	\$40/\$50	
<b>220538-11</b>	M-F	7/24-7/28	7-9:30A	\$40/\$50	
<b>220538-12</b>	M-F	7/31-8/4	7-9:30A	\$40/\$50	

<b>4 Week PM</b>					
<b>220538-03</b>	M-F	6/12-7/7	3:30-6P	\$138/\$173	
<b>220538-04</b>	M-F	7/10-8/4	3:30-6P	\$145/\$181	
<b>1 Week PM</b>					
<b>220538-13</b>	M-F	6/12-6/16	3:30-6P	\$40/\$50	
<b>220538-14</b>	M-F	6/19-6/23	3:30-6P	\$40/\$50	
<b>220538-15</b>	M-F	6/27-6/30	3:30-6P	\$40/\$50	
<b>220538-16</b>	M,W-F	7/3-7/7	3:30-6P	\$32/\$40	
<b>220538-17</b>	M-F	7/10-7/14	3:30-6P	\$40/\$50	
<b>220538-18</b>	M-F	7/17-7/21	3:30-6P	\$40/\$50	
<b>220538-19</b>	M-F	7/24-7/28	3:30-6P	\$40/\$50	
<b>220538-20</b>	M-F	7/31-8/4	3:30-6P	\$40/\$50	

### Weber

<b>4 Week AM</b>					
<b>220537-01</b>	M-F	6/12-7/7	7-9:30A	\$138/\$173	
<b>220537-02</b>	M-F	7/10-8/4	7-9:30A	\$145/\$181	
<b>1 Week AM</b>					
<b>220537-05</b>	M-F	6/12-6/16	7-9:30A	\$40/\$50	
<b>220537-06</b>	M-F	6/19-6/23	7-9:30A	\$40/\$50	
<b>220537-07</b>	M-F	6/26-6/30	7-9:30A	\$40/\$50	
<b>220537-08</b>	M,W-F	7/3-7/7	7-9:30A	\$32/\$40	
<b>220537-09</b>	M-F	7/10-7/14	7-9:30A	\$40/\$50	
<b>220537-10</b>	M-F	7/17-7/21	7-9:30A	\$40/\$50	
<b>220537-11</b>	M-F	7/24-7/28	7-9:30A	\$40/\$50	
<b>220537-12</b>	M-F	7/31-8/4	7-9:30A	\$40/\$50	

<b>4 Week PM</b>					
<b>220537-03</b>	M-F	6/12-7/7	3:30-6P	\$138/\$173	
<b>220537-04</b>	M-F	7/10-8/4	3:30-6P	\$145/\$181	
<b>1 Week PM</b>					
<b>220537-13</b>	M-F	6/12-6/16	3:30-6P	\$40/\$50	
<b>220537-14</b>	M-F	6/19-6/23	3:30-6P	\$40/\$50	
<b>220537-15</b>	M-F	6/26-6/30	3:30-6P	\$40/\$50	
<b>220537-16</b>	M,W-F	7/3-7/7	3:30-6P	\$32/\$40	
<b>220537-17</b>	M-F	7/10-7/14	3:30-6P	\$40/\$50	
<b>220537-18</b>	M-F	7/17-7/21	3:30-6P	\$40/\$50	
<b>220537-19</b>	M-F	7/24-7/28	3:30-6P	\$40/\$50	
<b>220537-20</b>	M-F	7/31-8/4	3:30-6P	\$40/\$50	





## Circus Camp



Explore tumbling, juggling, clowning, aerial feats, plate spinning, and theatrical skills. Professional staff will instruct campers in circus skills including clowning, mime, juggling and magic. In addition to field trips, guest performance artists will conduct hands-on workshops each session. This dynamic camp ends in a spectacular circus performance on the last week of each session. Swimming twice weekly and two exciting field trips are included. No Camp July 4.

**Senior — Age: 9 - 13 • Location: Lincoln Jr. High**

**221081-01** M-F 6/12-7/7 9:30A-3:30P \$579/\$724  
**221081-02** M-F 7/10-8/4 9:30A-3:30P \$609/\$761

**Junior — Age: 7 - 8 • Location: Highland School**

**221082-01** M-F 6/12-7/7 9:30A-3:30P \$579/\$724  
**221082-02** M-F 7/10-8/4 9:30A-3:30P \$609/\$761

## Circus Apprentices



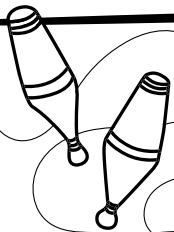
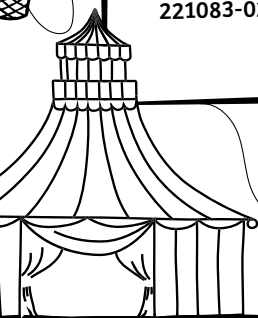
Circus Apprentices work on leadership skills within this specialized camp. They will join the staff to assist in teaching circus arts and be a part of a team. Circus Apprentices attend field trips, swim, and help with preparation of family night activities. Fee includes field trips and swimming. No Camp July 4.

Age: 14 - 15 Location: Lincoln Jr. High or Highland School

**221083-01** M-F 6/12-7/7 9:30A-3:30P \$238/\$298  
**221083-02** M-F 7/10-8/4 9:30A-3:30P \$250/\$313



# ART



## World Travelers



Discover new cultures by "traveling around the world!" Every week, campers will "visit" a new country and experience the colors, crafts and sounds of faraway lands. Activities reflecting each culture include arts and crafts, music, stories, indoor and outdoor activities, and games. A field trip and a guest artist — twice per session — are also included. Fees include all supplies, field trips and swimming a minimum of four days a week. No camp July 4.

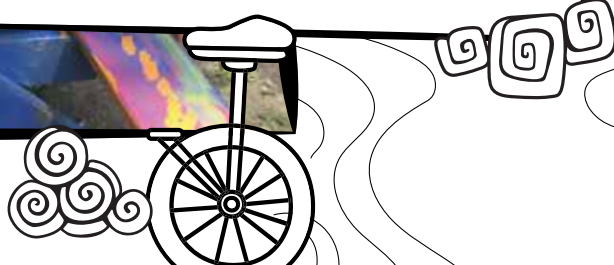
Age: 6 - 10 Location: Devonshire Center

### 4 Week

**222533-01** M-F 6/12-7/7 9:30A-3:30P \$512/\$640  
**222533-02** M-F 7/10-8/4 9:30A-3:30P \$539/\$674

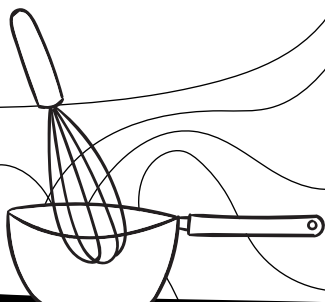
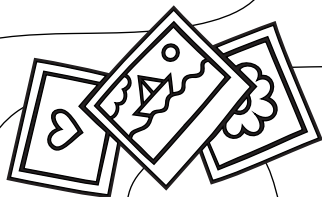
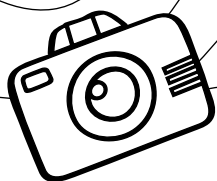
### 1 Week

**222533-03** M-F 6/12-6/16 9:30A-3:30P \$148/\$185  
**222533-04** M-F 6/19-6/23 9:30A-3:30P \$148/\$185  
**222533-05** M-F 6/26-6/30 9:30A-3:30P \$148/\$185  
**222533-06** M-F 7/3-7/7 9:30A-3:30P \$118/\$148  
**222533-07** M-F 7/10-7/14 9:30A-3:30P \$148/\$185  
**222533-08** M-F 7/17-7/21 9:30A-3:30P \$148/\$185  
**222533-09** M-F 7/24-7/28 9:30A-3:30P \$148/\$185  
**222533-10** M-F 7/31-8/4 9:30A-3:30P \$148/\$185





# ART



## Summer on Broadway



Aspiring thespians will develop skills in acting, vocal production, choreography, costuming, makeup, lighting and set construction. A professional staff of trained artists will share their wealth of knowledge with your child. The session culminates in a final stage performance the last week of camp. Fee includes swimming at least once a week, a field trip, and guest artists. No camp July 4.

Teen Performances are July 3, 7, August 1 & 4. Senior performances are July 6 and August 3. Junior performances are July 5 and August 2. It is recommended that a camper not miss the first three days of camp since these are audition days. Campers should plan to be on hand for the four days just prior to and including their scheduled performance.

### Junior (Age 8–10½ — Devonshire Cultural Center)

222481-03 M-F 6/12-7/7 9:30A-3:30P \$557/\$697

222481-04 M-F 7/10-8/4 9:30A-3:30P \$586/\$733

### Senior (Age 10½–12½ — Devonshire Cultural Center)

222481-01 M-F 6/12-7/7 9:30A-3:30P \$557/\$697

222481-02 M-F 7/10-8/4 9:30A-3:30P \$586/\$733

### Teen (Age 12½–17 — Lincoln Jr. High/Skokie Public Library)

222481-07 M-F 6/12-7/7 9:30A-3:30P \$557/\$697

222481-08 M-F 7/10-8/4 9:30A-3:30P \$586/\$733

## Behind the Scenes



Campers will learn the art of technical theatre while helping to produce Summer On Broadway productions. These skills include lighting, sound, stage management, set and costume design. Each Backstage Apprentice will prepare and interview for specific production positions on the crew and will focus on those areas during their time in camp. No camp July 4.

Teen Performances are July 3, 7, August 1 & 4. Senior performances are July 6 and August 3. Junior performances are July 5 and August 2. Fee includes training, t-shirt, swimming, field trips and cast party at the end of the session. Campers should plan to be on hand for the four days just prior to and including their scheduled performance.

Age: 12 - 17 Location: Devonshire Center

222481-05 M-F 6/12-7/7 9:30A-3:30P \$238/\$298

222481-06 M-F 7/10-8/4 9:30A-3:30P \$250/\$313

## Kids Cooking Camp



Your child will learn healthy and active living skills through cooking and physical activities. Campers will focus on nutrition, the five food groups and eating a well-balanced diet. Kids will create healthy recipes, while learning the fundamentals of cooking. Activities will include swimming, team sports, exercise, games and a field trip each session. No Camp July 4.

Location: Devonshire Center

### Senior (Age: 9 - 14)

221089-01 M-F 6/12-7/7 9:30A-3:30P \$560/\$700

221089-02 M-F 7/10-8/4 9:30A-3:30P \$590/\$738

221089-03 M-F 6/12-6/23 9:30A-3:30P \$325/\$406

221089-04 M-F 6/26-7/7 9:30A-3:30P \$308/\$386

221089-05 M-F 7/10-7/21 9:30A-3:30P \$325/\$406

221089-06 M-F 7/24-8/4 9:30A-3:30P \$325/\$406

### Junior (Age: 7 - 8)

221090-01 M-F 6/12-7/7 9:30A-3:30P \$560/\$700

221090-02 M-F 7/10-8/4 9:30A-3:30P \$590/\$738

221090-03 M-F 6/12-6/23 9:30A-3:30P \$325/\$406

221090-04 M-F 6/26-7/7 9:30A-3:30P \$308/\$386

221090-05 M-F 7/10-7/21 9:30A-3:30P \$325/\$406

221090-06 M-F 7/24-8/4 9:30A-3:30P \$325/\$406

## Cooking Camp Apprentices



Cooking Apprentices will grow as team members, leaders and chefs in this interactive cooking camp. Apprentices will assist staff members and campers in the daily creation of 2–4 different meals, snacks or desserts, all made to accommodate 40–60 people! They will also assist staff and participate in swim days, field trips and during non-cooking camp activities. Cooking Apprentices should have some prior cooking experience but more importantly, they should have enthusiasm for learning and being a part of a team.

Age: 14 - 15 Location: Devonshire Center

221092-01 M-F 6/12-7/7 9:30A-3:30P \$238/\$298

221092-02 M-F 7/10-8/4 9:30A-3:30P \$250/\$313





## Camp Art!



Aspiring artists will explore the many aspects of the artistic and cultural world, using a wide variety of mediums and materials, outdoor and indoor activities. Projects will focus on multimedia and three dimensional works. Campers will work on two to three art projects each day. A variety of exciting activities and games will be planned as well. Guest artists, field trips and weekly swimming trips will complete each session! Instruction for this specialized camp is provided by art teachers. All art supplies, field and swim trips, and a camp t-shirt are included in the camp fee. No camp Tuesday, July 4.

Age: 8 - 11

Location: Highland School

**NEW LOCATION**

### Full Day

**222531-01** M-F 6/12-7/7 9:30A-3:30P \$494/\$618

**222531-02** M-F 7/10-8/4 9:30A-3:30P \$520/\$650

### Half Day

**222531-03** M-F 6/12-7/7 12:30-3:30P \$335/\$419

**222531-04** M-F 7/10-8/4 12:30-3:30P \$353/\$441

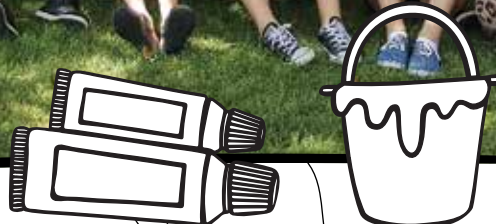
## Dance Intensive Camp

Grab your dancing shoes for this intensive camp, designed to enrich, challenge, and nurture the young mover in your life. Led by professional staff, campers will learn several genres of dance including classical, popular, and ethnic forms. They will also participate in dance history, choreography, and performance activities. This camp is designed for beginning to advanced level dancers. (No experience required.)

Age: 8 - 18

Location: Devonshire Center

**221091-01** M-F 8/7-8/18 9:30A-3:30P \$320/\$400





# EARLY CHILDHOOD

## Happy Campers

Laughing, smiling and having fun with friends is what it's all about at Happy Campers! Designed and supervised by early childhood education teachers, Happy Campers promises exciting and fun activities revolving around daily theme days such as Costume Day, Little Scientist Day, Farm Day and Birthday Day. Outdoor and indoor activities include arts and crafts, games, special guests, weekly pool trips and field trips. All campers are asked to bring a morning snack and a water bottle to camp each day. Full-day campers need to bring a sack lunch daily as well. Children must be toilet trained by the first day of camp. No camp July 4.

Age: 3 -5 Location: Devonshire School

### Half Day Age 3

<b>221223-01</b>	M,W,F	6/12-7/7	9:30A-12:30P	\$214/\$268
<b>221223-03</b>	M-F	6/12-7/7	9:30A-12:30P	\$274/\$343
<b>221223-09</b>	M,W,F	7/10-8/4	9:30A-12:30P	\$214/\$268
<b>221223-11</b>	M-F	7/10-8/4	9:30A-12:30P	\$288/\$360

### Half Day Age 4 & 5

<b>221223-02</b>	M,W,F	6/12-7/7	9:30A-12:30P	\$214/\$268
<b>221223-04</b>	M-F	6/12-7/7	9:30A-12:30P	\$274/\$343
<b>221223-10</b>	M,W,F	7/10-8/4	9:30A-12:30P	\$214/\$268
<b>221223-12</b>	M-F	7/10-8/4	9:30A-12:30P	\$288/\$360

### Full Day Age 4 & 5

<b>221223-06</b>	M,W,F	6/12-7/7	9:30A-3:30P	\$318/\$398
<b>221223-08</b>	M-F	6/12-7/7	9:30A-3:30P	\$456/\$570
<b>221223-14</b>	M,W,F	7/10-8/4	9:30A-3:30P	\$318/\$398
<b>221223-16</b>	M-F	7/10-8/4	9:30A-3:30P	\$480/\$600







## Lil' Campers

A great intro to summer camp, activities include arts and crafts, games, stories, music, movement, special events, field trips, and visits to the Skokie Water Playground twice a week. Child must be toilet-trained by the first day of camp. No camp July 4.

Age: 3 - 5 Location: Central Park

### Full Day

<b>221222-01</b>	M-F	6/12-7/7	9:30A-3:30P	\$469/\$586
<b>221222-02</b>	M-F	7/10-8/4	9:30A-3:30P	\$494/\$618

### 4 Week Half Day

<b>221222-03</b>	M-F	6/12-7/7	9:30A-1P	\$271/\$339
<b>221222-04</b>	M-F	7/10-8/4	9:30A-1P	\$286/\$358

### 2 Week Half Day

<b>221222-05</b>	M-F	6/12-6/23	9:30A-1P	\$158/\$198
<b>221222-06</b>	M-F	6/26-7/7	9:30A-1P	\$150/\$188
<b>221222-07</b>	M-F	7/10-7/21	9:30A-1P	\$158/\$198
<b>221222-08</b>	M-F	7/24-8/4	9:30A-1P	\$158/\$198

## Camp Amigos

Campers will laugh, play, create, sing, climb, dig, paint, cook, and discover great wonders, all while learning a new Spanish word each camp day! Some activities include Backwards Day, Olympic Day, Water Day, Cooking Day, Surprise Day, Treasure Hunt Day, Magic Day, Carnival Day and much more. No Camp July 4.

Age: 3 - 5 Location: Highland School

<b>221226-01</b>	Tu,Th	6/13-7/6	9:30A-12P	\$210/\$263
<b>221226-02</b>	Tu,Th	7/11-8/3	9:30A-12P	\$210/\$263

## Little Travelers

Your little camper will travel to real and imaginary lands, exploring nature in our neighborhoods and "diving under the sea." Little Travelers will have fun learning and exploring through arts and crafts, music, movement, outdoor activities and games, field trips, and visits from guest artists. Supplies, field trips, and swim fees are included. Campers visit the Devonshire Pool three mornings a week. Extended camp is not available for this camp. No camp July 4.

Age: 4 - 5 Location: Devonshire Center

<b>222532-01</b>	M-F	6/12-7/7	9:30A-2:30P	\$499/\$624
<b>222532-02</b>	M-F	7/10-8/4	9:30A-2:30P	\$525/\$656
<b>222532-03</b>	M-F	6/12-6/23	9:30A-2:30P	\$289/\$361
<b>222532-04</b>	M-F	6/26-7/7	9:30A-2:30P	\$275/\$344
<b>222532-05</b>	M-F	7/10-7/21	9:30A-2:30P	\$289/\$361
<b>222532-06</b>	M-F	7/24-8/4	9:30A-2:30P	\$289/\$361

## Little Earth Scouts

Your Little Earth Scout will spend three mornings a week getting to know the four Earth Friends, Sun, Soil, Air, and Water. Campers will conduct fun experiments indoors and make discoveries during play time outdoors, while also earning Earth Friends badges every day. Fee includes daily snacks, camp t-shirt, fanny pack, and camp supplies.

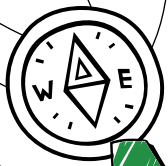
**Note: Although program content for the camp changes every year, the content is the same for Sessions 1 and 2.**

Age: 4 - 5 Location: Emily Oaks Nature Center

<b>222621-01</b>	M,W,F	6/12-7/7	9:30A-12P	\$240/\$300
<b>222621-02</b>	M,W,F	7/10-8/4	9:30A-12P	\$240/\$300
<b>222621-03</b>	M,W,F	6/12-7/7	1-3:30P	\$240/\$300







# NATURE



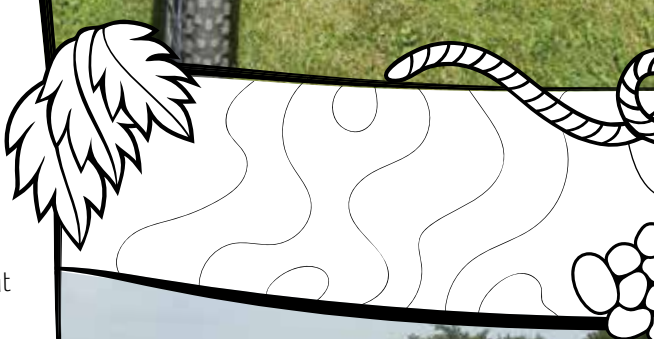
## Outdoor Challenge Camp

This unique summer program includes skill instruction and practice as well as camping trips every week! Personal confidence, group decision-making, and outdoor ethics are emphasized. Fee includes van transportation during campouts, weekly campout supplies and fees, field trip admissions, swimming weekly, and all equipment with the exception of personal gear and bicycles (rentals available).

Age: 12 - 15      Location: Emily Oaks Nature Center  
222641-01 M-F 6/12-7/7 9:30A-3:30P \$1017/\$1271  
222641-02 M-F 7/10-8/4 9:30A-3:30P \$1071/\$1339

## Weekly Camping Trips

- **Team Building and Tent Camping**  
Participate in a high ropes course, problem-solve during a teams course, practice your GPS skills, and attend an overnight campout at Irons Oaks Adventure Center.
- **River Canoeing**  
Learn canoeing skills and safety at Emily Oaks, then paddle the scenic Fox River in Illinois and explore Starved Rock State Park during a three-day trip.
- **Bicycle Touring**  
Review basic bike maintenance, pedal local trails, and travel the Elroy-Sparta bicycle trail in Wisconsin during a three-day camping trip.
- **Caving & Wall Climbing**  
Practice wall climbing at Vertical Endeavors before heading to Governor Dodge State Park in Wisconsin for a three-day trip that includes exploring Popp's Cave.





## Earth Adventures

Our Earth Adventures Camps are specialized programs designed to heighten a child's sense of relationship with the natural world and teach age-appropriate outdoor recreational skills. Each camp is supervised by a director and four college-aged leaders (a 1:8 leader to camper ratio) who involve the campers in captivating, highly structured daily activities. Though each camp is different in content, the Earth Adventures series aims to help campers feel capable and comfortable while journeying through the natural places on Earth. All campers swim twice weekly at one of the Park District pools.

**Note: Although program content for the camp changes every year, the content is the same for Sessions 1 & 2.**



### Earth Explorers



By visiting the nature center's wild places, Earth Explorers learn about the plants and animals that live in the area. Activities include nature games, sensory searches, discovery hikes, imaginative play and critter crafts, as well as a presentation featuring real reptiles and other animals. Although Earth Explorers are not taught outdoor recreation skills, they are invited to share in cookout snacks prepared by the Earth Travelers and Rangers, and may accompany the older campers on a canoe ride around our pond. Fee includes recreational swimming, field trips, a wildlife presentation, and project supplies. No camp July 4.

Age: 6 - 7

Location: Emily Oaks Nature Center

**222631-01** M-F 6/12-7/7 9:30A-3:30P \$506/\$633

**222631-02** M-F 7/10-8/4 9:30A-3:30P \$533/\$666

### Earth Travelers



Earth Travelers will learn basic outdoor skills, like how to paddle a canoe, pitch a tent, build a fire, and cook food outdoors. Cookouts are held weekly, and a campout at Emily Oaks is scheduled each session. Earth Travelers will also participate in fun activities that help them understand natural communities, develop teamwork skills, and practice good environmental habits. Fee includes recreational swimming, field trips, cookout food, canoeing instruction, and one campout. No camp July 4.

Age: 8 - 9

Location: Emily Oaks Nature Center

**222632-01** M-F 6/12-7/7 9:30A-3:30P \$551/\$689

**222632-02** M-F 7/10-8/4 9:30A-3:30P \$580/\$725

### Earth Rangers



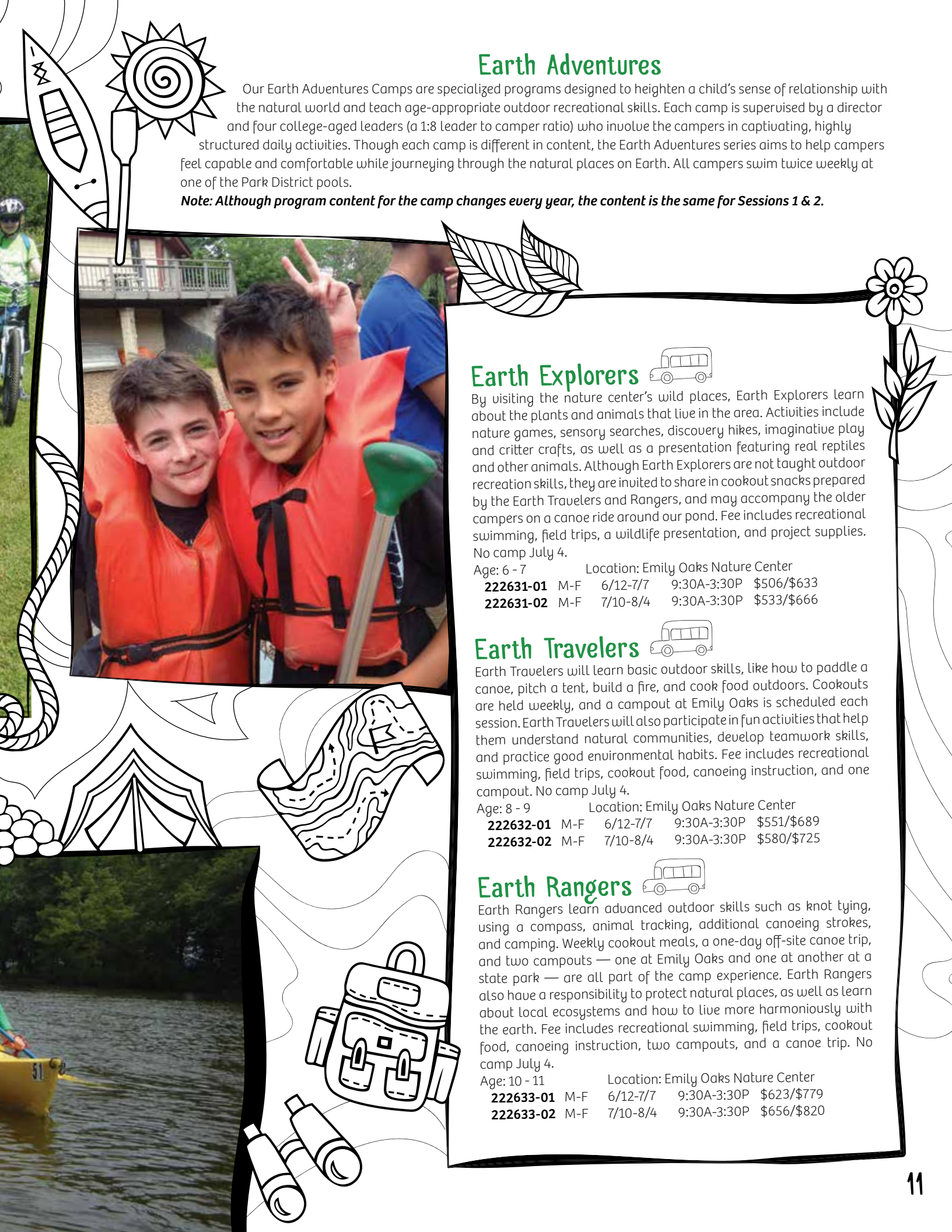
Earth Rangers learn advanced outdoor skills such as knot tying, using a compass, animal tracking, additional canoeing strokes, and camping. Weekly cookout meals, a one-day off-site canoe trip, and two campouts — one at Emily Oaks and one at another at a state park — are all part of the camp experience. Earth Rangers also have a responsibility to protect natural places, as well as learn about local ecosystems and how to live more harmoniously with the earth. Fee includes recreational swimming, field trips, cookout food, canoeing instruction, two campouts, and a canoe trip. No camp July 4.

Age: 10 - 11

Location: Emily Oaks Nature Center

**222633-01** M-F 6/12-7/7 9:30A-3:30P \$623/\$779

**222633-02** M-F 7/10-8/4 9:30A-3:30P \$656/\$820





# STEM Science Technology Engineering Mathematics

Niles Township District 219 High Schools

## Stem Camps for Grades K-8

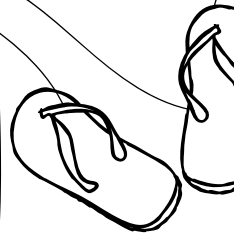
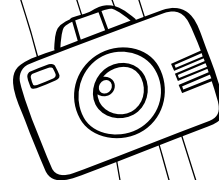
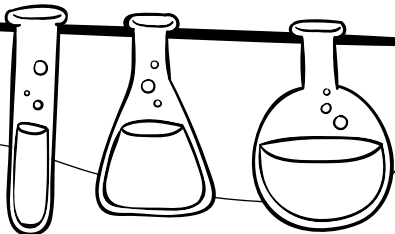
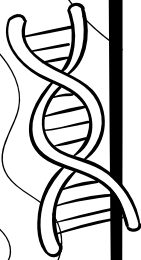
Niles West High School  
5701 W Oakton, Skokie

July 17–July 21  
July 24–28

D219 instructors have designed the camp sessions to immerse children in a fun, exciting learning environment using leading-edge technologies to explore hands-on STEM topics. At D219, STEM isn't just about studying from a textbook and taking tests, it's about experiencing and exploring. Our highly qualified teachers know that STEM education can be exciting and empowering for everyone, and we look forward to introducing some young budding scientists and engineers to the thrill

Fee: \$53 per class  
Cost includes t-shirt and lab supplies.

Registration begins February 21.  
Register online at: [summer.niles219.org](http://summer.niles219.org)



Dedicated to improving the quality of life and, through advocacy and awareness, promoting a successful leisure lifestyle for individuals with disabilities.

## M-NASR Camp

Maine-Niles Association of Special Recreation (M-NASR) provides a variety of camps for children and youth with special needs. M-NASR offers eight different camps for challenged individuals ages 3-21 years. A staff to participant ratio of 4 to 1 allows for individual attention, a structured environment and a safe and happy summer camp experience for everyone. Activities at camp are varied and may include arts and crafts, games, sports, swimming and field trips. All activities are designed to improve physical and social skills and provide a memorable summer for our campers. Complete camp information will be available in late February. If you have questions, call M-NASR at (847) 966-5522.



# GENERAL

The Skokie Park District offers general camps for children at three Skokie locations. These enriching camps promote healthy lifestyles through active play and environmental awareness. Each child's strengths are showcased through a wide variety of games, sports, and arts & crafts. Children will attend field trips and swim twice a week. Each session culminates with a family night full of fun! No camp July 4.

Age: 5 - 11

## Camp Iwannago

Location: Oakton Park

### 4 Week

<b>220532-01</b>	M-F	6/12-7/7	9:30A-3:30P	\$416/\$520
<b>220532-02</b>	M-F	6/12-7/7	9:30A-12:30P	\$216/\$270
<b>220532-03</b>	M-F	7/10-8/4	9:30A-3:30P	\$438/\$548
<b>220532-04</b>	M-F	7/10-8/4	9:30A-12:30P	\$240/\$300
<b>220532-05</b>	M-F	6/12-7/7	12-3:30P	\$216/\$270

### 1 Week

<b>220532-06</b>	M-F	6/12-6/16	9:30A-3:30P	\$120/\$151
<b>220532-07</b>	M-F	6/19-6/23	9:30A-3:30P	\$120/\$151
<b>220532-08</b>	M-F	6/26-6/30	9:30A-3:30P	\$120/\$151
<b>220532-09</b>	M-F	7/3-7/7	9:30A-3:30P	\$96/\$120
<b>220532-10</b>	M-F	7/10-7/14	9:30A-3:30P	\$120/\$151
<b>220532-11</b>	M-F	7/17-7/21	9:30A-3:30P	\$120/\$151
<b>220532-12</b>	M-F	7/24-7/28	9:30A-3:30P	\$120/\$151
<b>220532-13</b>	M-F	7/31-8/4	9:30A-3:30P	\$120/\$151

## Central Park Camp

Location: Central Park

### 4 Week

<b>221731-01</b>	M-F	6/12-7/7	9:30A-3:30P	\$416/\$520
<b>221731-02</b>	M-F	7/10-8/4	9:30A-3:30P	\$438/\$548

### 1 Week

<b>221731-03</b>	M-F	6/12-6/16	9:30A-3:30P	\$120/\$151
<b>221731-04</b>	M-F	6/19-6/23	9:30A-3:30P	\$120/\$151
<b>221731-05</b>	M-F	6/26-6/30	9:30A-3:30P	\$120/\$151
<b>221731-06</b>	M-F	7/3-7/7	9:30A-3:30P	\$96/\$120
<b>221731-07</b>	M-F	7/10-7/14	9:30A-3:30P	\$120/\$151
<b>221731-08</b>	M-F	7/17-7/21	9:30A-3:30P	\$120/\$151
<b>221731-09</b>	M-F	7/24-7/28	9:30A-3:30P	\$120/\$151
<b>221731-10</b>	M-F	7/31-8/4	9:30A-3:30P	\$120/\$151

## North End Camp

Location: Terminal Park

### 4 Week

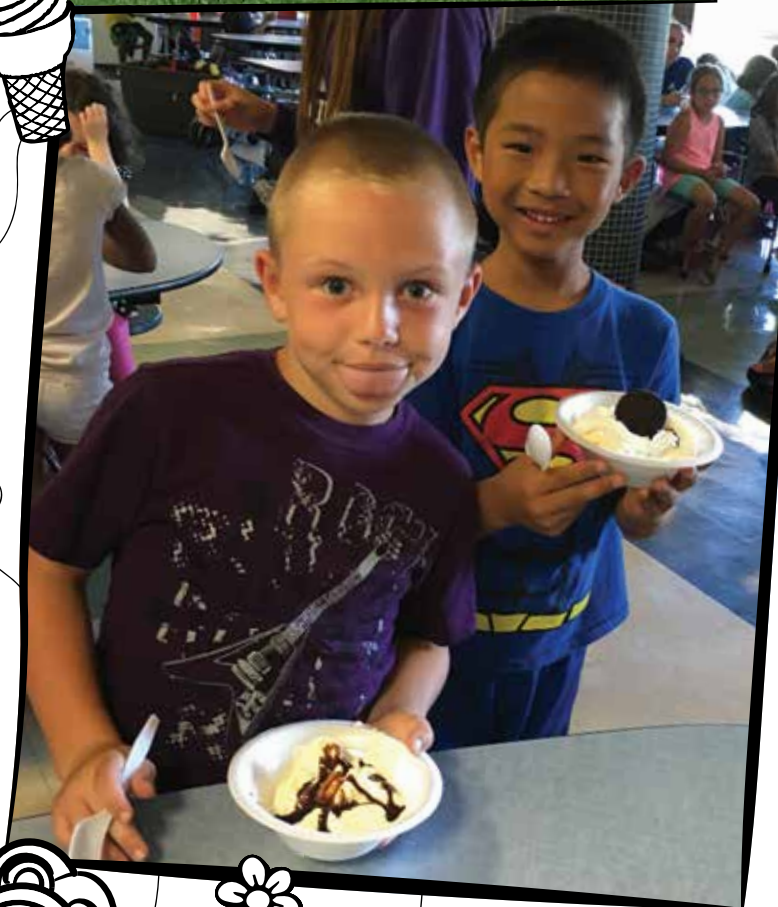
<b>221732-01</b>	M-F	6/12-7/7	9:30A-3:30P	\$416/\$520
<b>221732-02</b>	M-F	7/10-8/4	9:30A-3:30P	\$438/\$548

### Half Day

<b>221732-03</b>	M-F	6/12-7/7	12-3:30P	\$216/\$270
<b>221732-04</b>	M-F	7/10-8/4	12-3:30P	\$240/\$300

### 1 Week

<b>221732-05</b>	M-F	6/12-6/16	9:30A-3:30P	\$120/\$151
<b>221732-06</b>	M-F	6/19-6/23	9:30A-3:30P	\$120/\$151
<b>221732-07</b>	M-F	6/26-6/30	9:30A-3:30P	\$120/\$151
<b>221732-08</b>	M-F	7/3-7/7	9:30A-3:30P	\$96/\$120
<b>221732-09</b>	M-F	7/10-7/14	9:30A-3:30P	\$120/\$151
<b>221732-10</b>	M-F	7/17-7/21	9:30A-3:30P	\$120/\$151
<b>221732-11</b>	M-F	7/24-7/28	9:30A-3:30P	\$120/\$151
<b>221732-12</b>	M-F	7/31-8/4	9:30A-3:30P	\$120/\$151





# SPECIAL INTEREST



## Historical Explorers

Explore history through the years with a variety of educational and creative projects from different time periods including, arts & crafts, games, skits and more. Each week two or more new eras will be introduced ranging from ancient history to modern American history. Sign-up for all the weeks or just those that interest your camper. Campers must bring their own snacks and non-disposable water bottles. Simple knot-tying, sewing and braiding skills may be required for certain projects. No camp July 4.

Age: 7 - 11 Location: Skokie Heritage Museum

### Ancient Egypt and Mesopotamia

**220131-13** M-F 6/12-6/16 9:30A-12:30P \$132/\$165

### Medieval/Renaissance

**220131-14** M-F 6/19-6/23 9:30A-12:30P \$132/\$165

### Colonial/Pioneer/Victorian

**220131-16** M-F 6/26-6/30 9:30A-12:30P \$132/\$165

### 1950s/1960s

**220131-18** M,W-F 7/3-7/7 9:30A-12:30P \$106/\$133

### Ancient Greece and Rome

**220131-19** M-F 7/10-7/14 9:30A-12:30P \$132/\$165

## Historical Travelers

**NEW**

Travel through time during daily field trips to local cultural and historic sites. Field trips will include visits to locations in Skokie, Evanston and Chicago. Some physical activity including walking and canoeing will be required. Campers must bring sack lunches and non-disposable water bottles.

Age: 11 - 13 Location: Skokie Heritage Museum

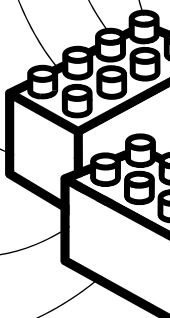
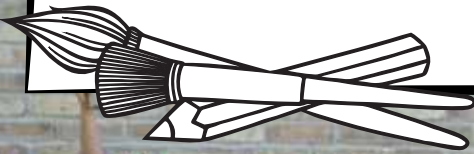
**220132-01** M-F 7/17-7/21 9:30A-3:30P \$232/\$290

## Chess Camp

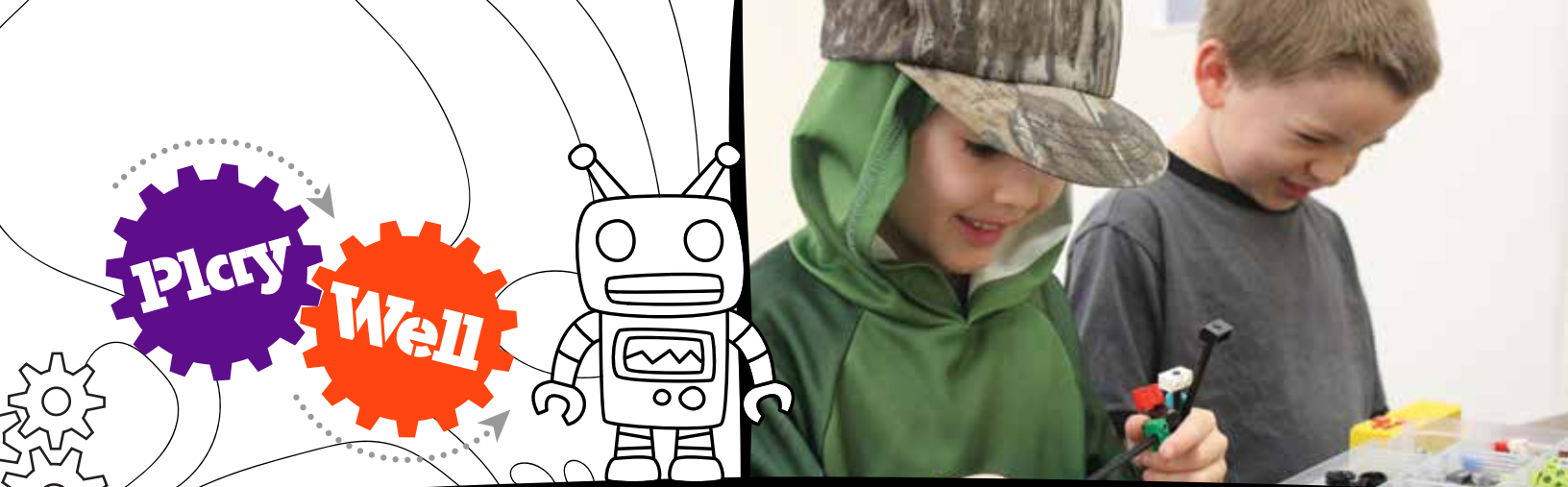
Checkmate Champions is the future of chess teaching. This camp combines the classical strategies of chess with new and innovative modern technology that create a fun experience for all kids, regardless of their chess playing abilities. Students will learn the rules, history, and how to record games to reflect on them at a later date. Students will play their favorite chess variation games such as Bughouse (team chess), Allies, Bobby Fischer, and IPad chess. Students will also have the opportunity to participate in a real life chess tournament, playing against different opponents and using a tournament clock. Please register by August 6. Instructor: Lorenzo Davis, Checkmate Champions

Age: 6 - 10 Location: Oakton Center

**220231-01** M-F 8/14-8/18 9A-3P \$390/\$488







## Intro to STEM with LEGO® session I

Tap into your imagination with tens of thousands of LEGO®! Build engineer designed projects such as Boats, Spinning Tops, Castles, and Helicopters, then, use special pieces to create your own unique design. Explore the endless creative possibilities LEGO® with the guidance of an experienced Play-Well instructor.

Age: 5 - 6 Location: Highland School  
**221227-01** M-F 6/12-6/16 9:30-11:30A \$148/\$185

## STEM Challenge with LEGO® session I

Power on your engineering skills with tens of thousands of LEGO®! Apply real-world concepts in physics, engineering, and architecture through engineer-designed projects such as Catapults, Pneumatic Claws, Conveyor Belts, and the Battltrack. Design and build as never before, and explore your craziest ideas in a supportive environment. An experienced instructor will challenge new and returning students to engineer at the next level.

Age: 7 - 11 Location: Highland School  
**221228-01** M-F 6/12-6/16 12:30-3:30P \$160/\$200

## Robotics using LEGO® WeDo

Build and program robots in this introductory Robotics class using the LEGO® WeDo system. Learn basic programming skills, simple engineering concepts, and the names of robot components. Work in small groups to complete several projects using tilt and motion sensors. This is a great way to prepare young Robotics enthusiasts for our more advanced Robotics programs.

Age: 7 - 8 Location: Highland School  
**221229-01** M-F 6/19-6/23 9:30-11:30A \$148/\$185

## Robotics using LEGO® NXT

Build and program robots using the LEGO® Mindstorms system! Learn about mechanical and software design, loops, conditional statements, problem solving, and teamwork skills. Work in small groups, program and build your robot, and rise to the challenge. Control the robot to avoid obstacles, pick up and carry objects, and play sounds. Projects are structured so that students work in an open-ended, investigative environment while having fun.

Age: 9 - 12 Location: Highland School  
**221230-01** M-F 6/19-6/23 12:30-3:30P \$200/\$250

## Intro to STEM with LEGO® session II

Ratchet up your imagination with tens of thousands of LEGO®! Build engineer designed projects such as Gravity Cars, Angry Birds, Mini Walkers, and a Space Base. Then use special pieces to create your own unique design! New and returning students can explore the endless creative possibilities of the LEGO® building system with the guidance of an experienced Play-Well instructor. Session 1 is not a prerequisite for Session 2

Age: 5 - 6 Location: Highland School  
**221231-01** M-F 7/10-7/14 9:30-11:30A \$148/\$185

## STEM Challenge with LEGO® session II

Level up your engineering skills with Play-Well TEKologies and tens of thousands of LEGO®! Apply real-world concepts in physics, engineering, and architecture through engineer-designed projects such as Belt-Drive Cars, Truss Bridges, Rail Racers, and Pneumatic Forklifts! Design and build as never before, and explore your craziest ideas in a supportive environment. Session 1 is not a prerequisite for Session 2

Age: 7 - 12 Location: Highland School  
**221232-01** M-F 7/10-7/14 12:30-3:30P \$160/\$200

## JEDI Engineering using LEGO®

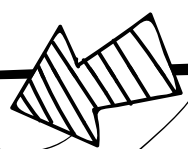
Young Jedi will explore worlds far, far away and engineering principles right in front of them. Defeat the Empire by designing and refining LEGO® X-Wings, R2-units, and settlements on far-flung edges of the galaxy. Imagination and engineering combine to create motorized and architectural projects such as energy catapults, shield generators and defense turrets.

Age: 5 - 6 Location: Highland School  
**221233-01** M-F 7/17-7/21 9:30-11:30A \$148/\$185

## JEDI Master Engineering using LEGO®

The Force is strong in this class. Build complex machines and structures based on the best designs from a galaxy far, far away. Projects include LEGO® X-Wings, AT-AT walkers, Pod Racers, Star Destroyers, Cloud Cities, settlements, and fortresses. Play-Well's Jedi instructors reinforce key engineering concepts such as gear trains, worm drives, pneumatics, eccentric motion and more as students tap into the powerful forces of imagination and engineering.

Age: 7 - 12 Location: Highland School  
**221234-01** M-F 7/17-7/21 12:30-3:30P \$160/\$200





# SPORTS

## Junior Tennis Camps

The Skokie Park District Camps provide beginner to advanced players an opportunity to improve their game in a fun, positive atmosphere. Kids are evaluated and paired into their age group and skill level on the first day of the camp. Our campers learn from the best coaches in the sport and leave tennis camp with confidence and a passion to enjoy this lifelong sport. While our main emphasis is on tennis, we also incorporate soccer, basketball, tennis, baseball, and Cardio Tennis Hustle™ fitness in our program. An individualized player profile analysis and a camp t-shirt are included in the fee. For more information call Mir Rahim Tennis Supervisor at (847) 674-1500 , ext. 2154. No camp July 4.

Age: 4 - 17

### Pee Wee Tennis — Age: 4 - 6 (Central Park)

<b>224635-21</b>	M-Th	6/5-6/15	8-9A	\$120/\$150
<b>224635-22</b>	M-Th	6/19-6/29	8-9A	\$120/\$150
<b>224635-23</b>	M-Th	7/4-7/13	8-9A	\$105/\$132
<b>224635-24</b>	M-Th	7/17-7/27	8-9A	\$120/\$150
<b>224635-25</b>	M-Th	7/31-8/10	8-9A	\$120/\$150
<b>224635-26</b>	M-Th	8/14-8/24	8-9A	\$120/\$150

### Beginner-Advanced — Age: 4 - 17 (Central Park)

<b>224635-01</b>	M-F	6/5-6/16	9A-12P	\$346/\$433
<b>224635-02</b>	M-F	6/19-6/30	9A-12P	\$346/\$433
<b>224635-03</b>	M-F	7/3-7/14	9A-12P	\$313/\$387
<b>224635-04</b>	M-F	7/17-7/28	9A-12P	\$346/\$433
<b>224635-05</b>	M-F	7/31-8/11	9A-12P	\$346/\$433
<b>224635-06</b>	M-F	8/14-8/25	9A-12P	\$346/\$433
<b>224635-13</b>	M-F	8/14-8/25	12-3:30P	\$390/\$460
<b>224635-16</b>	M-F	6/5-6/16	12-3:30P	\$390/\$460
<b>224635-17</b>	M-F	6/19-6/30	12-3:30P	\$390/\$460
<b>224635-18</b>	M-F	7/3-7/14	12-3:30P	\$356/\$414
<b>224635-19</b>	M-F	7/17-7/28	12-3:30P	\$390/\$460
<b>224635-20</b>	M-F	7/31-8/11	12-3:30P	\$390/\$460

### Beginner-Advanced — Age: 4 - 17 (Skokie Park Tennis Center)

<b>224635-07</b>	M-Th	6/5-6/15	4-6P	\$202/\$253
<b>224635-08</b>	M-Th	6/19-6/29	4-6P	\$202/\$253
<b>224635-09</b>	M-Th	7/3-7/13	4-6P	\$177/\$221
<b>224635-10</b>	M-Th	7/17-7/27	4-6P	\$202/\$253
<b>224635-11</b>	M-Th	7/31-8/10	4-6P	\$202/\$253
<b>224635-12</b>	M-Th	8/14-8/24	4-6P	\$202/\$253

## Summerstars Hockey Camp

Campers must have completed two full sessions of Future Flyers Hockey classes or equivalent programs to enroll in this camp. This camp is for experienced skaters only. Campers receive up to nine hours of ice time instruction and fun each week. Other activities include golf, swimming, bowling, basketball, in-line hockey, outdoor games and much more. Lunch is available for purchase.

Age: 6 - 13

Location: Skatium

### AM

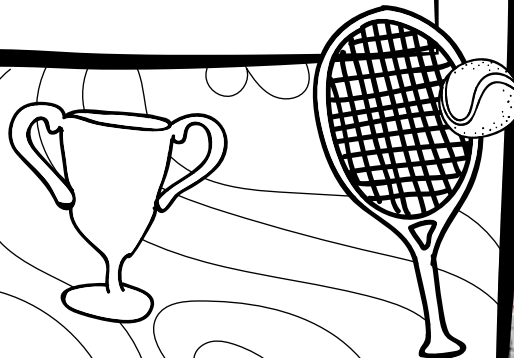
<b>221501-01</b>	M-F	6/12-6/16	8:30A-12P	\$100/\$115
<b>221502-01</b>	M-F	6/19-6/23	8:30A-12P	\$100/\$115
<b>221503-01</b>	M-F	6/26-6/30	8:30A-12P	\$100/\$115
<b>221504-01</b>	M,W-F	7/3-7/7	8:30A-12P	\$80/\$92
<b>221505-01</b>	M-F	7/10-7/14	8:30A-12P	\$100/\$115
<b>221506-01</b>	M-F	7/17-7/21	8:30A-12P	\$100/\$115
<b>221507-01</b>	M-F	7/24-7/28	8:30A-12P	\$100/\$115
<b>221508-01</b>	M-F	7/31-8/4	8:30A-12P	\$100/\$115
<b>221509-01</b>	M-F	8/7-8/11	8:30A-12P	\$100/\$115
<b>221510-01</b>	M-F	8/14-8/18	8:30A-12P	\$100/\$115

### Full Day

<b>221501-03</b>	M-F	6/12-6/16	8:30A-4P	\$195/\$225
<b>221502-03</b>	M-F	6/19-6/23	8:30A-4P	\$195/\$225
<b>221503-03</b>	M-F	6/26-6/30	8:30A-4P	\$195/\$225
<b>221504-03</b>	M,W-F	7/3-7/7	8:30A-4P	\$156/\$180
<b>221505-03</b>	M-F	7/10-7/14	8:30A-4P	\$195/\$225
<b>221506-03</b>	M-F	7/17-7/21	8:30A-4P	\$195/\$225
<b>221507-03</b>	M-F	7/24-7/28	8:30A-4P	\$195/\$225
<b>221508-03</b>	M-F	7/31-8/4	8:30A-4P	\$195/\$225
<b>221509-03</b>	M-F	8/7-8/11	8:30A-4P	\$195/\$225
<b>221510-03</b>	M-F	8/14-8/18	8:30A-4P	\$195/\$225

### Summerstars Goalie

<b>221501-04</b>	M-F	6/12-6/16	8:30A-4P	\$175/\$205
<b>221502-04</b>	M-F	6/19-6/23	8:30A-4P	\$175/\$205
<b>221503-04</b>	M-F	6/26-6/30	8:30A-4P	\$175/\$205
<b>221504-04</b>	M,W-F	7/3-7/7	8:30A-4P	\$175/\$205
<b>221505-04</b>	M-F	7/10-7/14	8:30A-4P	\$175/\$205
<b>221506-04</b>	M-F	7/17-7/21	8:30A-4P	\$175/\$205
<b>221507-04</b>	M-F	7/24-7/28	8:30A-4P	\$175/\$205
<b>221508-04</b>	M-F	7/31-8/4	8:30A-4P	\$175/\$205
<b>221509-04</b>	M-F	8/7-8/11	8:30A-4P	\$175/\$205
<b>221510-04</b>	M-F	8/14-8/18	8:30A-4P	\$175/\$205





## Elementary Sports Camp

Learn the basics of volleyball, soccer, basketball, softball and archery. Other activities will include floor hockey, tennis, football and many other recreational sports. Campers will go swimming twice a week, participate in all-camp special event days, and weekly field trips. Instructions and skill development will be the main emphasis with team games throughout the camp session. No Camp July 4.

Age: 7 - 10

Location: Norman Schack Park

### 4 Week

<b>220431-01</b>	M-F	6/12-7/7	9:30A-3:30P	\$457/\$571
<b>220431-02</b>	M-F	7/10-8/4	9:30A-3:30P	\$481/\$599

### 1 Week

<b>220431-07</b>	M-F	6/12-6/16	9:30A-3:30P	\$132/\$165
<b>220431-08</b>	M-F	6/19-6/23	9:30A-3:30P	\$132/\$165
<b>220431-09</b>	M-F	6/26-6/30	9:30A-3:30P	\$132/\$165
<b>220431-10</b>	M-F	7/3-7/7	9:30A-3:30P	\$132/\$165
<b>220431-11</b>	M-F	7/10-7/14	9:30A-3:30P	\$132/\$165
<b>220431-12</b>	M-F	7/17-7/21	9:30A-3:30P	\$132/\$165
<b>220431-13</b>	M-F	7/24-7/28	9:30A-3:30P	\$132/\$165
<b>220431-14</b>	M-F	7/31-8/4	9:30A-3:30P	\$132/\$165

## Middle School Sports Camp

Campers will receive instruction from skilled athletes in a variety of competitive sports. Camp features tournament play of baseball/softball, football, basketball, soccer, tennis and volleyball. No camp July 4.

Age: 11 - 13

Location: Norman Schack Park

### 4 Week

<b>220434-01</b>	M-F	6/12-7/7	9:30A-3:30P	\$457/\$571
<b>220434-02</b>	M-F	7/10-8/4	9:30A-3:30P	\$481/\$599

### 1 Week

<b>220434-08</b>	M-F	6/12-6/16	9:30A-3:30P	\$132/\$165
<b>220434-09</b>	M-F	6/19-6/23	9:30A-3:30P	\$132/\$165
<b>220434-10</b>	M-F	6/26-6/30	9:30A-3:30P	\$132/\$165
<b>220434-11</b>	M-F	7/3-7/7	9:30A-3:30P	\$132/\$165
<b>220434-12</b>	M-F	7/10-7/14	9:30A-3:30P	\$132/\$165
<b>220434-13</b>	M-F	7/17-7/21	9:30A-3:30P	\$132/\$165
<b>220434-14</b>	M-F	7/24-7/28	9:30A-3:30P	\$132/\$165
<b>220434-15</b>	M-F	7/31-8/4	9:30A-3:30P	\$132/\$165



## Indoor Sports Camp

The temperature may be hot, but the school gym will offer a cool place for young athletes to exercise and learn new sports skills. Campers learn the basics including volleyball, basketball, soccer, floor hockey, softball, football, and more. Campers will go swimming twice a week, participate in all-camp special event days and weekly field trips. No camp July 4!

Age: 7 - 12

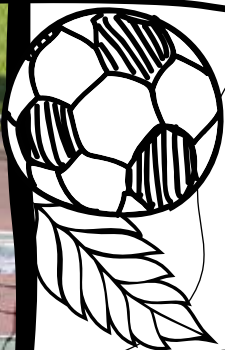
Location: St. Joan of Arc School

### 4 Week

<b>220432-01</b>	M-F	6/12-8/4	9:30A-3:30P	\$457/\$571
<b>220432-02</b>	M-F	7/10-8/4	9:30A-3:30P	\$481/\$601

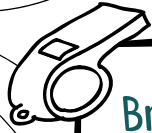
### 1 Week

<b>220432-07</b>	M-F	6/12-6/16	9:30A-3:30P	\$132/\$165
<b>220432-08</b>	M-F	6/19-6/23	9:30A-3:30P	\$132/\$165
<b>220432-09</b>	M-F	6/26-6/30	9:30A-3:30P	\$132/\$165
<b>220432-10</b>	M-F	7/3-7/7	9:30A-3:30P	\$106/\$128
<b>220432-11</b>	M-F	7/10-7/14	9:30A-3:30P	\$132/\$165
<b>220432-12</b>	M-F	7/17-7/21	9:30A-3:30P	\$132/\$165
<b>220432-13</b>	M-F	7/24-7/28	9:30A-3:30P	\$132/\$165
<b>220432-14</b>	M-F	7/31-8/4	9:30A-3:30P	\$132/\$165





# SPORTS



## Brazilian Soccer

Brazilian Coaches provide professional instruction in this specialty soccer camp. The camp will focus on foot skills and individual player improvement. Fee includes soccer ball, t-shirt and player evaluation.

Location: Gross Point Park

### Age: 6 - 9

<b>221832-01</b>	M-F	6/19-6/23	9A-12P	\$192/\$240
<b>221832-03</b>	M-F	6/19-6/23	1-4P	\$192/\$240

### Age: 10 - 14

<b>221832-02</b>	M-F	6/19-6/23	9A-12P	\$192/\$240
<b>221832-04</b>	M-F	6/19-6/23	1-4P	\$192/\$240

## Chicago Storm Soccer Camp

This camp provides a unique opportunity for children to work with professional and collegiate soccer players and coaches. Campers of all levels work on skills and strategies in a curriculum that is game like and fun! Fee includes a camp shirt, soccer ball and player evaluation. Classes on Friday, June 30 will all be from 9 a.m.-1 p.m.

Location: Gross Point Park

### Mini-Kickers Camp (Age: 4 - 7)

<b>220435-01</b>	M-F	6/26-6/30	9A-12P	\$175/\$219
------------------	-----	-----------	--------	-------------

### Half-Day Camp (Age: 7 - 13)

<b>220435-02</b>	M-F	6/26-6/30	9A-12P	\$175/\$219
------------------	-----	-----------	--------	-------------

### Full Day Camp (Age: 7 -13)

<b>220435-03</b>	M-F	6/26-6/30	9A-3P	\$210/\$262
------------------	-----	-----------	-------	-------------

## Challenger British Soccer Camp

This specialty camp offers world-class instruction by talented professional coaches in a safe, stimulating and fun environment. Participants will receive a free t-shirt, soccer ball, and a personal player evaluation from a British soccer coach. Volunteer host families are needed for each session. If you would like to host a coach, please let us know. Host families will receive a significant fee rebate.

Age: 3 - 18      Location: Gross Point Park

### Ages 3 - 4

<b>221831-01</b>	M-F	7/10-7/14	11A-12P	\$104/\$130
------------------	-----	-----------	---------	-------------

### Ages 5 - 6

<b>221831-02</b>	M-F	7/10-7/14	9-11A	\$130/\$162
------------------	-----	-----------	-------	-------------

### Ages 6 - 12 — Half Day

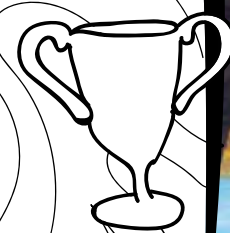
<b>221831-03</b>	M-F	7/10-7/14	9A-12P	\$130/\$162
------------------	-----	-----------	--------	-------------

### Ages 10 - 16 — Half Day

<b>221831-04</b>	M-F	7/10-7/14	1-4P	\$130/\$162
------------------	-----	-----------	------	-------------

### Ages 6 - 18 — Full Day

<b>221831-05</b>	M-F	7/10-7/14	9A-4P	\$227/\$283
------------------	-----	-----------	-------	-------------





## B.L.A.S.T. Camp

B.L.A.S.T. Is our acronym for the daily fitness and wellness themes that this one of a kind camp is built on. Each day explores a new way to be active in a fun atmosphere geared toward making healthy choices. Register for just one day or register for the full week long camp. No camp July 4.

Age: 7 - 12 Location: Weber Leisure Center

### Boots and Backpacks

220429-01 M 8/7 9A-4P \$30/\$38

### Lead the Way!

220429-02 Tu 8/8 9A-4P \$30/\$38

### Appetite in Action

220429-03 W 8/9 9A-4P \$30/\$38

### Swim and Sand

220429-04 Th 8/10 9A-4P \$30/\$38

### Tee it Up!

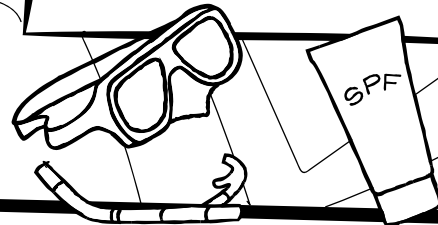
220429-05 F 8/11 9A-4P \$30/\$38

### Full Week

220429-06 M-F 8/7-8/11 9A-4P \$150/\$190

## Golf Camp

Summer junior golf camps will be listed in the upcoming 2017 Spring and Summer Program Guides under the heading of "Junior Summer Golf Clinics." If you need information regarding our junior golf programs prior to the release of the program guides, please contact Rich Lee, Golf Operations Manager at [rjlee@skokieparks.org](mailto:rjlee@skokieparks.org) or at (847) 674-1500, ext. 3120. Registration begins May, 2017.



## Jr. Aquatics Camp

This two-week 'mini' version of Aquatics Camp is designed to introduce the skills utilized in our Aquatics Camp to younger children. Staff will lead campers in age-appropriate activities and games, emphasizing basic lifesaving and water rescue skills in a fun and interactive manner. Campers will also learn basics of first aid (not a certification course). All campers should be able to swim 25 yards without stopping.

Age: 8 - 10 Location: Skokie Water Playground

220640-01 M-F 6/26-7/7 9:30A-3:30P \$210/\$263

## Aquatics Camp



For the camper who loves spending their summer at the pool, this camp features aquatic games, team building activities, and plenty of time to enjoy the water slides. Campers will also learn exciting lifeguarding skills from professional lifeguards, including water rescues and basic first aid (not a certification course). In addition to spending time at Skokie Water Playground, campers will take a field trip to a different aquatic facility each week. All campers should be able to swim 25 yards without stopping.

Age: 11 - 15 Location: Skokie Water Playground

220641-02 M-F 7/10-8/4 9:30A-3:30P \$425/\$531





# SPORTS



Hot Shots sports programs are devoted to youth athletics, education and programming. Campers will develop skills and every child will play.

## Tiny Tot Sports Camp

At this camp, children are introduced to soccer, t-ball, football, kickball and other group games. Campers will develop motor skills, and social and emotional growth through teamwork and good sportsmanship. Kids must bring a lunch.

Age: 4 - 6

### Terminal Park

<b>220420-01</b>	M-F	8/7-8/11	9A-4P	\$234/\$292
<b>220420-02</b>	M-F	8/7-8/11	9A-12P	\$135/\$169
<b>220420-03</b>	M-F	8/7-8/11	12A-4P	\$185/\$231

### Weber Leisure Center

<b>220420-04</b>	M-F	8/14-8/18	9A-4P	\$234/\$292
<b>220420-05</b>	M-F	8/14-8/18	9A-12P	\$135/\$169
<b>220420-06</b>	M-F	8/14-8/18	12-4P	\$185/\$231

## Multi-Sports Camp

This camp features soccer, baseball, volleyball, floor hockey and other group games with a focus on fundamentals and sportsmanship. Fee includes team and group competition, individual contests, daily prizes and a t-shirt. Outdoor campers must bring a water bottle and snack each day.

Age: 7 - 14

Location: Weber Leisure Center

<b>220421-01</b>	M-F	8/14-8/18	9A-4P	\$234/\$292
<b>220421-02</b>	M-F	8/14-8/18	9A-2P	\$185/\$231

## Basketball Clinic—Shooting

Hot Shots staff will demonstrate proper shooting form while discouraging bad habits. Campers will practice their shot in competitive shooting games, and learn home shooting drills, both of which will turn a good jump shot into a great jump shot!

Age: 7 - 14

Location: Weber Leisure Center

<b>220426-01</b>	M,W	8/7-8/9	4-5P	\$40/\$50
<b>220426-02</b>	Tu,Th	8/15-8/17	4-5P	\$40/\$50

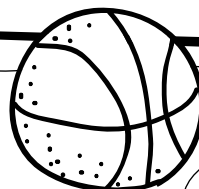
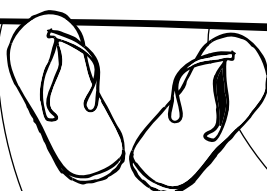
## Basketball Skills Camp

This camp focuses on improving fundamentals including dribbling, passing, rebounding, shooting, individual and team defense. Campers will be divided into groups based on age, size and ability. Daily contests and prizes will also be featured. Fee includes camp t-shirt and a basketball. Campers should bring a snack, drinks, and a lunch.

Age: 7 - 14

Location: Weber Leisure Center

<b>220422-01</b>	M-F	8/7-8/11	9A-4P	\$234/\$292
<b>220422-02</b>	M-F	8/7-8/11	9A-2P	\$185/\$231







## Wolverine Wrestling Camp NEW

Coaches from Niles West High School will instruct this camp. Campers will learn fundamental skills and apply them to supervised drill time within weight groups. All campers will receive a camp t-shirt.

Age: 8 - 14      Location: Niles West High School  
**220424-01** M-Th 6/12-6/15 12:30-2:30P \$40/\$50  
**220424-02** M-Th 6/19-6/22 12:30-2:30P \$40/\$50

## Elementary Football Camp NEW

Prepare for fall football with drills and fundamentals. Non-contact drills, formations, route running and player position specifics will be covered. We encourage all players that participated in our North-West tackle team to participate.

Age: 8 - 14      Location: Niles West High School  
**220430-01** M-Th 7/10-7/20 1-2:30P \$65/\$91

## Windy City Rage Softball Camp NEW

Windy City Rage is one of the premier fast-pitch travel softball programs on the North Shore. Our goal is to develop players to compete at the highest level of the sport while making new friends, and focusing on a positive activity. Camp will focus on the fundamentals of softball, developing skills, and proper mechanics. Rage coaches and players from 16/18U will provide instruction. Campers must provide their own equipment. Fee includes a t-shirt, player evaluations and prizes for the skills challenges.

Age: 10 - 14      Location: Laramie Park  
**220441-01** M-F 6/26-6/30 8:30-11:30A \$180/\$225  
**220441-02** M-F 6/26-6/30 12-3P \$180/\$225

## All-American Basketball Academy

Our summer camps are known for instilling self-confidence, leadership, and sportsmanship through high-energy and positive motivation from coaches with decades of knowledge! All campers should bring a water bottle every day and at least one snack per camp. Fee includes a certificate of achievement and souvenir. Basketballs provided. For more information please contact Sam Rizzo at [coachsam13@gmail.com](mailto:coachsam13@gmail.com).

Age: 5½ - 13      Location: Niles North High School

**AM**  
**220425-01** M-F 8/7-8/11 8:30A-12:30P \$185/\$195

**PM**  
**220425-02** M-F 8/7-8/11 1-3:30P \$185/\$195

**Full Day**  
**220425-03** M-F 8/7-8/11 8:30A-3:30P \$275/\$285



# TEEN



## X-Camp



This exciting camp for teens offers field trips, sports, games, arts and crafts projects, swimming, movies, walking trips and team building activities. Camp includes eight field trips per session and swimming twice a week. Walking field trips may include photo scavenger hunts, as well as trips to downtown Skokie for treats and shopping. Each session of X-Camp will include a field trip to Great America (a late return and no PM bus service day). No camp July 4.

Age: 11 - 14	Location: Lorel Park			
<b>221741-01</b>	M-F	6/12-7/7	9:30A-3:30P	\$489/\$611
<b>221741-02</b>	M-F	7/10-8/4	9:30A-3:30P	\$515/\$644
<b>221741-03</b>	M,W,F	6/12-7/7	9:30A-3:30P	\$315/\$394
<b>221741-04</b>	M,W,F	7/10-8/4	9:30A-3:30P	\$315/\$394
<b>221741-05</b>	Tu,Th	6/13-7/6	9:30A-3:30P	\$185/\$231
<b>221741-06</b>	Tu,Th	7/11-8/3	9:30A-3:30P	\$210/\$263

## Urban Adventures

Teen campers will learn to navigate the big city every day via the Skokie Swift and Chicago's 'L' trains and busses. Visit museums, sports venues, arcades, Millennium Park, North Avenue Beach and other exciting and interesting sites. Participants will see many of Chicago's well known attractions and discover some of its hidden treasures, all without burning a hole in their pocket. Some field trips may be located in the suburbs/surrounding areas, but participants will still use public transportation. Fee includes all public transportation, supervision by qualified staff, and admission to all sites and activities. Campers should bring a disposable sack lunch and water bottle everyday. Campers will meet outside of Starbucks each day at 9:30 a.m. No Camp July 4.

Age: 12 - 15	Location: Skokie Swift Station on Dempster			
<b>221743-01</b>	M-F	6/12-6/23	9:30A-3:30P	\$337/\$421
<b>221743-02</b>	M-F	6/26-7/7	9:30A-3:30P	\$303/\$379
<b>221743-03</b>	M-F	7/10-7/21	9:30A-3:30P	\$337/\$421
<b>221743-04</b>	M-F	7/24-8/4	9:30A-3:30P	\$337/\$421



## CIT (Counselors in Training)



Campers will become mature, self-confident, reliable, motivated young adults and learn how to work with young campers. The CIT will register for a specific camp and will work with that camp four days a week. On Thursdays, CIT's will report to the Oakton Community Center for team building activities or for a CIT field trip (see schedule below). Directors and program leaders will observe CITs frequently during each session, evaluating them at session's end. No camp July 4.

CIT's are required to wear a CIT T-shirt (provided by the park district), khaki shorts, and gym shoes everyday. On swim days a one piece bathing suit is required.

Mandatory participant orientations at Oakton Community Center  
 Session I: June 8, 4-5 p.m. • Session II: July 5, 4-5 p.m.

Site specific Camp Directors will contact their CIT's with the time and date of a separate camp-specific site orientation. Bus service not available for Happy Campers.

### 1st & 3rd Thursday

AM: Camp leadership, communication, teamwork and problem solving activities  
 PM: Swim at Skokie Water Playground

### 2nd Thursday

All day field trip to a local water park or beach

### 4th Thursday

All day field trip to Great America



## CIT I—Ages: 12 - 13

### Earth Adventures

<b>222741-03</b>	M-F	6/12-7/7	9:30A-3:30P	\$314/\$393
<b>222741-04</b>	M-F	7/10-8/4	9:30A-3:30P	\$330/\$413

### Central Camp

<b>222741-05</b>	M-F	6/12-7/7	9:30A-3:30P	\$314/\$393
<b>222741-06</b>	M-F	7/10-8/4	9:30A-3:30P	\$330/\$413

### Camp Iwannago

<b>222741-07</b>	M-F	6/12-7/7	9:30A-3:30P	\$314/\$393
<b>222741-08</b>	M-F	7/10-8/4	9:30A-3:30P	\$330/\$413

### North End Camp

<b>222741-09</b>	M-F	6/12-7/7	9:30A-3:30P	\$314/\$393
<b>222741-10</b>	M-F	7/10-8/4	9:30A-3:30P	\$330/\$413

### World Travelers

<b>222741-11</b>	M-F	6/12-7/7	9:30A-3:30P	\$314/\$393
<b>222741-12</b>	M-F	7/10-8/4	9:30A-3:30P	\$330/\$413

### Sports Camp

<b>222741-13</b>	M-F	6/12-7/7	9:30A-3:30P	\$314/\$393
<b>222741-14</b>	M-F	7/10-8/4	9:30A-3:30P	\$330/\$413

### Weber Indoor Sports Camp

<b>222741-15</b>	M-F	6/12-7/7	9:30A-3:30P	\$314/\$393
<b>222741-16</b>	M-F	7/10-8/4	9:30A-3:30P	\$330/\$413

## CIT II—Ages: 14 - 15

### Happy Campers

<b>222742-01</b>	M-F	6/12-7/7	9:30A-3P	\$314/\$393
<b>222742-02</b>	M-F	7/10-8/4	9:30A-3P	\$330/\$413

### Earth Adventures

<b>222742-03</b>	M-F	6/12-7/7	9:30A-3:30P	\$314/\$393
<b>222742-04</b>	M-F	7/10-8/4	9:30A-3:30P	\$330/\$413

### Central Camp

<b>222742-05</b>	M-F	6/12-7/7	9:30A-3:30P	\$314/\$393
<b>222742-06</b>	M-F	7/10-8/4	9:30A-3:30P	\$330/\$413

### Camp Iwannago

<b>222742-07</b>	M-F	6/12-7/7	9:30A-3:30P	\$314/\$393
<b>222742-08</b>	M-F	7/10-8/4	9:30A-3:30P	\$330/\$413

### North End Camp

<b>222742-09</b>	M-F	6/12-7/7	9:30A-3:30P	\$314/\$393
<b>222742-10</b>	M-F	7/10-8/4	9:30A-3:30P	\$330/\$413

### World Travelers

<b>222742-11</b>	M-F	6/12-7/7	9:30A-3:30P	\$314/\$393
<b>222742-12</b>	M-F	7/10-8/4	9:30A-3:30P	\$330/\$413

### Sports Camp

<b>222742-13</b>	M-F	6/12-7/7	9:30A-3:30P	\$314/\$393
<b>222742-14</b>	M-F	7/10-8/4	9:30A-3:30P	\$330/\$413

### Weber Indoor Sports Camp

<b>222742-15</b>	M-F	6/12-7/7	9:30A-3:30P	\$314/\$393
<b>222742-16</b>	M-F	7/10-8/4	9:30A-3:30P	\$330/\$413





# Camp Open House

Wednesday, January 25, 6-7 p.m. • Oakton Community Center, 4701 Oakton St., Skokie

Camp Open House is the place to learn about the basic content of our various camp programs, staff, field trips, swimming, transportation, extended care and other camp related subjects. Compare and contrast programs and fees, and meet camp supervisors. Registration will not be accepted at the Camp Open House. Registration for residents begins at 12 p.m. on Sunday, January 29 and for non-residents on Wednesday, February 22.

## General Camp information: (847) 674-1500

### Age Requirements

Children attending Skokie Park District camps must be age appropriate. Ages listed refer to the age of the child as of September 1, 2017 unless otherwise noted. Preschool campers must be toilet trained and the appropriate age by September 1. A copy of a birth certificate is required with the registration form when specifically stated within individual camp descriptions.

### Camper Groupings & Staff-to-Camper Ratio

Group sizes vary from program to program. An average camp staff-to-participant ratio is 1:12. Any group exceeding 12 children will be supplemented with an additional staff person. Camp programs that accommodate children under the age of 5 have a camp staff-to-participant ratio of 1:8.

### Special Needs (American Disability Act)

The Skokie Park District welcomes the participation of all individuals in our programs, including those with disabilities. We are fully committed to complying with the ADA and providing reasonable accommodations to facilitate participation in our programs.

Please assist us in providing a positive experience for your child with special needs by notifying the camp supervisor (see page 1) of any special needs at the time of enrollment. Your confidentiality will be respected. The sooner we know about your special situation, the more time we have to make reasonable accommodations to improve your child's recreational experience and to ensure a smooth integration of your child into our camp program.

Individuals who are hearing impaired and want information regarding park district or M-NASR programs should call (847) 966-5522.

### Sign-In & Out Procedures

Every camper must be signed in and out by the person dropping off and picking him/her up. We will not release a child to someone whose name is not on the authorized pick-up form. Parents will be asked to show a picture ID.

### It's Raining, It's Pouring

Camp will be held whether it rains or shines.

### Insurance

The Skokie Park District does not provide individual Accident and Health Insurance.

### Special Dietary Needs, Kosher/Food Allergies

Campers on restricted diets will gladly be accommodated. Parents will be advised of food selections in advance. Alternate choices will be provided whenever possible. Please indicate your special dietary needs on the registration form at the time of enrollment.

### Illness Policy

Children should not be brought to camp with illnesses that are contagious or with fevers, diarrhea, vomiting, or unidentifiable rashes. Campers may not return to the program until they are fever and/or diarrhea free for 24 hours. Children who are not participating normally (who show extreme lethargy or fatigue) will be considered ill and sent home.

### Medication Policy

Medication may be given to a child when authorized by the child's physician. All medication must remain in the original container indicating the child's name, type, and date of the prescribed medication, and amounts and time of dosage. A medication consent form must be signed by the child's parents and given to the Camp Director.

### Everything Under the Sun

All camps are held outdoors daily with limited or no use of air-conditioned indoor facilities with the exception of Camp Art!, Circus Camp, Summer on Broadway, World Travelers, Little Travelers and Indoor Sports Camp. During heat emergency days, children are rotated into indoor facilities/shade areas and given frequent water breaks.

### Camp Attire

Children attending Park District camps should wear comfortable clothing and athletic shoes. Please keep in mind that our camps provide a relaxed, informal setting, therefore we recommend that you keep your valuable clothing and accessories at home. We also suggest that you label your child's belongings. Camp t-shirts will be distributed to each participant during the first week of programming and should be worn on field trip days.

### Picture This

Registrants and participants permit the taking of photographs and video of themselves and their children during Skokie Park District activities for publication, as the Park District deems necessary.

### Late Pick-up Policy

Camp staff will supervise children who are left beyond the scheduled pick-up time until a parent or other authorized adult on the pick-up list arrives. However, late pick-ups will result in a fee. The first time a parent is late a fee will be charged at a rate of \$5 for the first 15 minutes and \$1 for every minute thereafter. The second time a parent is late, the charge will be \$10 for the first 15 minutes; the third time, the charge will be \$15 and will continue in \$5 increments for each occurrence. The dollar-per-minute charge will stay constant. All measurements of time are to be according to the clock located at the camp.

### Summer School

We have created a variety of camp programs that complement summer school. If your child plans on attending summer school we encourage you to consider Camp Art!, North End Camp, or Camp Iwannago. Please note that campers attending summer school will miss scheduled field trips and swimming. Parents will need to make alternate arrangements for childcare on these program days.

### Camp Staff

Our summer staff contribute to the success of our diverse camp programs! A qualified and experienced adult director supervises each camp daily. Counselors at each camp are a mixture of mature and enthusiastic college and high school students, parents, educators and coaches. All camp staff completes an extensive training program, which includes supervision and safety techniques, and program development. Camp directors are all CPR certified.

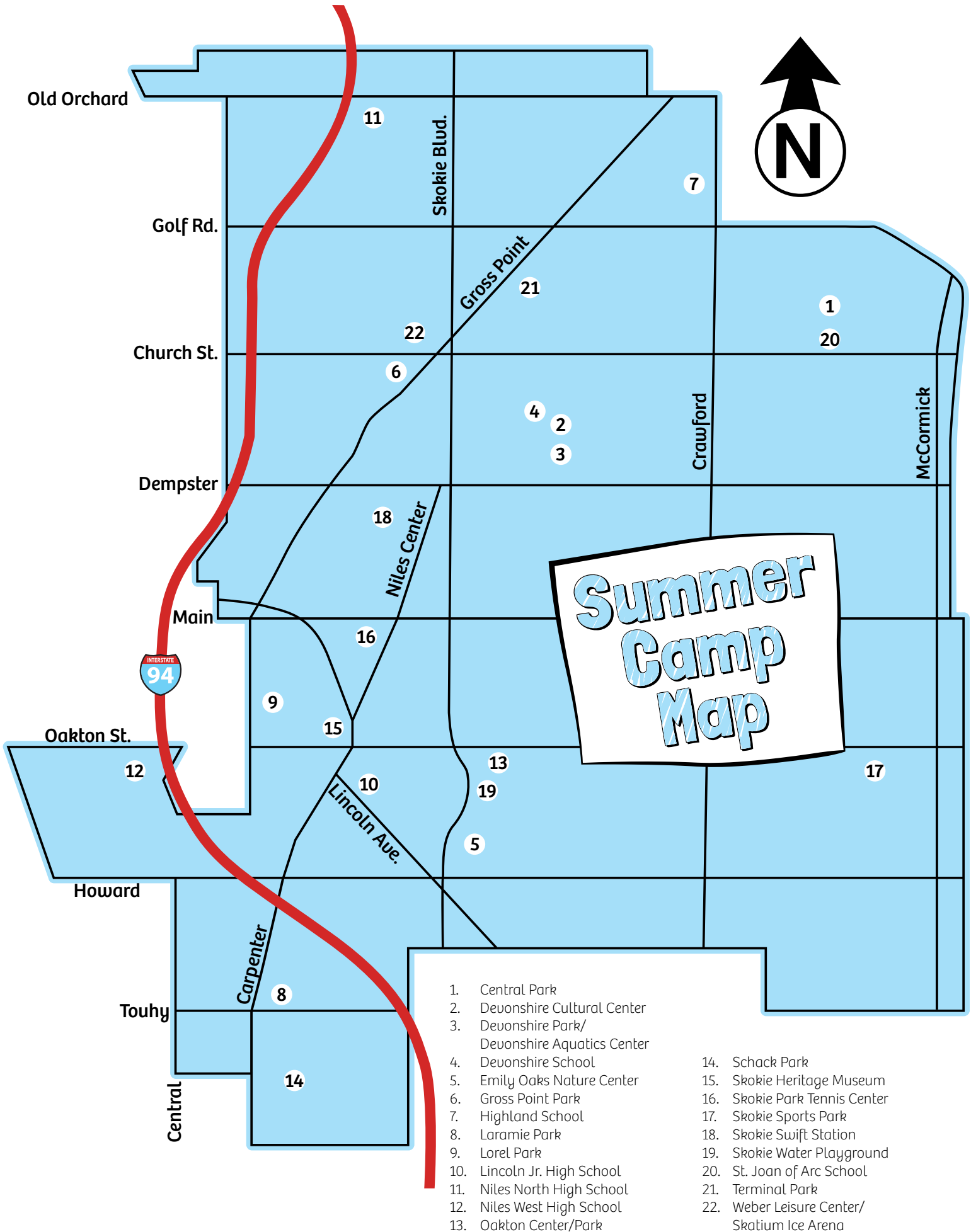
### Summer Job Opportunities

Be a camp leader! If you are over the age of 16 and you are looking for a fun-filled opportunity as a camp leader, then the Skokie Park District has an opportunity for you.

The Skokie Park District is now accepting applications for Summer Day Camp Positions (Camp Directors, Counselors and Jr. Counselors). Duties include directing children in outdoor leisure games, sports, arts and crafts and other recreational activities.

As a camp leader, you can be a role model to campers at one of the many camps listed in this brochure. Apply online at [SkokieParks.org](http://SkokieParks.org). For more information call Lynn Seebacher, Human Resources Manager at (847) 933-4357.







# CAMP REGISTRATION INFORMATION

Resident Camp Registration begins at 12 p.m. on 1/29.  
Non-Resident Camp Registration begins 2/22.

## Walk In Registration

Walk-in resident registration begins at 12 p.m. on January 29 at the Weber Leisure Center, Oakton Community Center, Emily Oaks Nature Center and Devonshire Cultural Center. Registration is on a first-come, first-served basis. We will process registration while you wait so we can provide immediate confirmation of program enrollment with a receipt. Please check for accuracy and notify us immediately with any discrepancies.

## Online Registration

In order to register on-line you must be pre-registered in the Park District's registration system and know your login and password. Please establish a household with the Park District prior to camp registration (see below). If you do not remember your login and/or password call the Park District at (847) 674-1500; a Customer Service Representative will assist you. You can also visit the registration page at [SkokieParks.org](http://SkokieParks.org) and click 'Quick links Forgotten Password?'

## Establishing a Household in person

### Skokie Residents

When establishing a household in person at any Park District facility please bring proof of residency as explained at right.

### Non-residents

Non-residents may establish a household by walking into any facility. No proof of residency is required.

## Establishing a Household online

### Skokie Residents

It is extremely important to establish your household on-line at least two business days prior to resident registration on January 29. When you enroll a new household on the web your household is automatically flagged as a non-resident household until you show proof of residency, in person, at any Skokie Park District facility. If you wait until the resident registration date to establish your household you will not be allowed to register on-line because your household will be flagged as a non-resident even if you have entered a valid Skokie address. (Non-residents are not able to enroll in camp until February 22.)

### Non-residents

It is important to establish your household on-line with the Park District prior to non-resident camp registration on February 22. Although all new households established on-line are immediately flagged as non-resident households, new accounts are processed the next business day. If you wait to establish your household until registration day you will not be allowed to register online.

## Mail-In & Fax Registration

Mail-in and fax registration is randomly processed beginning January 29 for residents and February 22 for non-residents. Mail or fax completed forms to:

Skokie Park District  
9300 Weber Park Place  
Skokie, IL 60077

Fax: (847) 763-2025

You will receive a confirmation receipt by mail; please check for accuracy and notify us immediately with any discrepancies.

## Proof of Residency

Acceptable proof of residency includes: valid driver's license, utility bill or property tax bill. The individual's primary residence must be within the Skokie Park District boundaries (which may vary from the Village of Skokie's boundaries – check your property tax bills). Any owner of real estate within the boundaries paying taxes to the Skokie Park District will be considered a resident, as will his immediate family. Immediate family is defined as husband, wife, (or life partner) and children who reside at the real estate owner's residence. Residency rates for Skokie Park District camp programs apply to residents of zip codes 60076, 60077, 60203 and for families not living or paying taxes to the Skokie Park District that attend Skokie School District 69. However, District 69 families not living or paying taxes to the Skokie Park District cannot register until the non-resident registration date of February 22.

## Waiver Required

For insurance purposes, Park District programs and activities require a signed waiver. Please sign the waiver section on the registration form or receipt. Patrons will not be able to participate in classes or programs if the waiver is not signed.

## Proof of Age

Please send a photocopy of the child's birth certificate with the registration, if proof of age is required (children ages 3 to 5).

## Household Balance

Prior to registering for Camp 2017, all household balances need to be paid in full. Inquiries regarding your household balance can be referred to a Customer Service Representative at (847) 674-1500 (Monday-Friday, 9 a.m.-5 p.m.).

## Payment Methods

The Skokie Park District accepts the following as a method of payment:  
Cash is gladly accepted for walk-in registrations. With the proper identification we are happy to accept local checks made payable to the Skokie Park District. No second party or co-signed checks are accepted. Checks that are returned from the bank for any reason will incur an additional \$25 charge.  
We accept Visa, MasterCard and Discover.

## Payment Options

Payment can be made through the following methods:

**Full-Payment**—Full payment includes \$50 deposit. Full payment is required as follows:  
For all new registrations on or after March 31.  
For the following programs: Bus Transportation, 1-week Camps, Tennis Camps, Hot Shots Sports, Historical Explorers and Travelers, BLAST Camp, Final Camp Fling, and Summer's End.

**Auto-Debit Installment Plan**—A \$50 deposit for each child for each camp section is due at the time of registration. One half of the remaining fee is auto-debited on April 10 and the balance is auto-debited May 10. In order for your camp registration to be finalized, you must complete the payment agreement form.

After being set up for Auto-Debit, if you prefer to pre-pay and avoid your auto-debit being processed, you must make payment by the following dates:  
Regarding April 10 Auto-Debit: Pre-Pay by March 31.  
Regarding May 10 Auto-Debit: Pre-Pay by April 28.

## Transfer Policy

Prior to the first day of camp (camp begins on June 12), transfers from one camp to another will be accommodated by completing a modification form at any park district facility. After June 12, transfer requests must be approved by the Camp Supervisor.

## Camp Refund Policy 2017

### 4-week session (6/12-7/7)

On or before May 1  
May 2-June 11  
June 12-18  
June 19-25  
June 26 and after

### Fee

100% refundable  
80% refundable  
60% refundable  
40% refundable  
non-refundable

### 4-week session (7/10-8/4)

On or before June 1  
June 2-July 9  
July 10-16  
July 17-23  
July 24 and after

### Fee

100% refundable  
80% refundable  
60% refundable  
40% refundable  
non-refundable

### 2-week session (6/12-6/23)

On or before May 1  
May 2-June 11  
June 12-18  
June 19 and after

### Fee

100% refundable  
80% refundable  
40% refundable  
non-refundable

### 2-week session (6/26-7/7)

On or before May 15  
May 16-June 25  
June 26-July 2  
July 3 and after

### Fee

100% refundable  
80% refundable  
40% refundable  
non-refundable

### 2-week session (7/10-7/21)

On or before June 1  
June 2-July 9  
July 10-16  
July 17 and after

### Fee

100% refundable  
80% refundable  
40% refundable  
non-refundable

### 2-week session (7/24-8/4)

On or before June 15  
June 16-July 23  
July 24-30  
July 31 and after

### Fee

100% refundable  
80% refundable  
40% refundable  
non-refundable

## 1-week sessions

Refunds available the Friday prior to first day of camp (Excludes Historical Explorers & Summerstars Hockey Camp & Play Well Tek).

In order to process your request, we ask you to complete a Modification form and present it to a Customer Service Representative. Any credit due from a refund will be first applied to any household balance that exists. All refund checks are processed within two weeks of receipt of the original request.



**SKOKIE PARK DISTRICT SUMMER CAMP REGISTRATION FORM** 9300 Weber Park Place Skokie IL 60077 Ph: 847-674-1500 Fx: 847-763-2025 DATE:

<b>Parent/Guardian #1:</b>		<b>First Name:</b>		<b>Parent/Guardian #2:</b>		<b>First Name:</b>	
<b>Birth Date:</b>		<b>Last Name:</b>		<b>Birth Date:</b>		<b>Last Name:</b>	
<b>Cell Ph:</b>		<b>Hm Ph:</b>		<b>Cell Ph:</b>		<b>Hm Ph:</b>	
<b>Street Address:</b>		<b>Unit #</b>		<b>Street Address:</b>		<b>Unit #:</b>	
<b>City/State/Zip:</b>				<b>City/State/Zip:</b>			
<b>Email Address:</b>				<b>Email Address:</b>			

**Pay in Full Today?** Yes: \_\_\_\_\_ No: \_\_\_\_\_

If No, you must pay a minimum \$50 deposit per camp & fill out/sign auto debit payment agreement on back of this form. Please note, some camps require payment in full; see Summer Camp Brochure for list.

CAMPER NAME AND INFORMATION		CAMP NAME	CAMP NUMBER - SECTION	CAMP FEE	TODAY'S PAYMENT (Min \$50/camp Per child)
<b>CAMPER #1:</b>	<b>First Name:</b>		-		
<b>Last Name:</b>			-		
<b>Birth Date:</b>	<b>Gender (M/F):</b>	<b>Grade:</b>			
<b>Circle T-Shirt Size: S M L XL Youth or Adult</b>			-		
<i>Special Accommodations? Please fill out back of this form.</i>					
Enrolling in more than 6 camps? Cross out Camper #2 & continue.					
<b>CAMPER #2:</b>	<b>First Name:</b>		-		
<b>Last Name:</b>			-		
<b>Birth Date:</b>	<b>Gender (M/F):</b>	<b>Grade:</b>			
<b>Circle T-Shirt Size: S M L XL Youth or Adult</b>			-		
<i>Special Accommodations? Please fill out back of this form.</i>					
Enrolling in more than 6 camps? Cross out Camper #3 & continue					
<b>CAMPER #3:</b>	<b>First Name:</b>		-		
<b>Last Name:</b>			-		
<b>Birth Date:</b>	<b>Gender (M/F):</b>	<b>Grade:</b>			
<b>Circle T-Shirt Size: S M L XL Youth or Adult</b>			-		
<i>Special Accommodations? Please fill out back of this form.</i>					
Enrolling more than 3 children? Please use additional form.					
			<b>TOTALS:</b>		

**REQUIRED: THE LIABILITY WAIVER ON BACK OF THIS FORM MUST BE SIGNED**

**Registering by FAX or MAIL? See Camp Payment Agreement section on back.**

**REMAINING AMT DUE (TOTAL FEE MINUS TODAY'S TOTAL PYMT):**

# CAMP PAYMENT AGREEMENT 2017

**Staff Use Only**

HH#

FN

LN

Please check mark applicable section, fill out information as needed, and sign agreement below:

I am registering by Fax/Mail and am paying in full with: Check (enclosed) or Credit Card (Information filled out below)

I am registering by Fax/Mail and am only paying deposits with: Check (enclosed) or Credit Card (Information filled out below)

I want the remaining camp balance to be auto debited as set forth below.

I am paying a minimum of \$50 for each camp at time of registration and

**I authorize the Skokie Park District to auto debit the remaining camp balance in 2 equal amounts; the first half on April 10, 2017 and the second half on May 10, 2017 using the following account:**

Person's name on checking/savings acct.: \_\_\_\_\_ Bank/Savings Institution Name & Address: \_\_\_\_\_  
 Routing Number (Nine Digits): \_\_\_\_\_ Account Number: \_\_\_\_\_ **Required: Attach voided check to this form.**

Person's Name on Credit Card: \_\_\_\_\_ Circle One:  Visa  Master Card  Discover

Credit Card Number: \_\_\_\_\_ Exp. Date: \_\_\_\_\_ CW/CVC# \_\_\_\_\_

**AGREEMENT:**

1. Checking/Savings: I understand that I can stop any payment authorized hereunder by giving my financial institution oral or written notice at any time up to 3 business days before my automatic deduction is scheduled to occur, but the financial institution may require me to give written confirmation within 14 business days or an oral stop order for it to remain effective.
2. I understand that I am responsible to notify the Skokie Park District immediately if any of my bank account or credit card information changes.
3. I understand that these financial arrangements will remain in effect until: a) the total amount due is collected by the Skokie Park District, b) I have requested in writing a cancellation of the program and have paid all current fees, or c) the Skokie Park District or my financial institution sends me a notice of termination of this agreement.
4. I have read and agree to comply with the Camp Payment Information printed on both sides of this form and in the Summer Camp Brochure.
5. I understand that any declined payment will incur a \$25 service fee.

Sign Name: \_\_\_\_\_ Print Name: \_\_\_\_\_ Date: \_\_\_\_\_

**RELEASE AND HOLD HARMLESS AGREEMENT (SIGNATURE REQUIRED):** Participants 18 years of age or older and parents of participants under the age of 18 should read this form carefully and be aware that in signing up and participating in this program you will be waiving and releasing all claims for injuries or damages you might personally sustain which might arise out of this program. As a participant in this program (or as a parent of a minor participant), I recognize and acknowledge that there are certain risks of physical injury associated with such participation, and I agree to assume the full risk for any injuries, damages, or loss which I may sustain as a result of participating (or of my minor child's participation) in such program as against the Skokie Park District, its officers, agents, servants, and employees. I do hereby fully release and discharge the Skokie Park District and its officers, agents, servants, and employees from any and all claims from injuries, damages, or loss which I may have or which may accrue to me on account of my participation (or on account of my minor child's participation) in the program. I further agree to indemnify, hold harmless, and defend the Skokie Park District, its officers, agents, servants and employees from any and all claims resulting from injuries, damages, and losses sustained by me and arising out of, connected with, or in any way associated with the activities of the program, including transportation services when provided (or my minor child's participation in the program). I have read and fully understand this Release and Hold Harmless Agreement and any program details provided to me. It is mutually understood that the facsimile registration document (including waiver and release of all claims) shall substitute for and have the same legal effect as the original form.

\_\_\_\_\_  
 Primary Guardian Signature

\_\_\_\_\_  
 Date

**SPECIAL ACCOMMODATIONS:** The Skokie Park District welcomes individuals with disabilities into programs. Please describe any accommodations needed for successful inclusion in program(s) here: \_\_\_\_\_







Weber Leisure Center  
9300 Weber Park Place  
Skokie, Illinois 60077  
www.SkokieParks.org

PRSRT STD  
U.S. Postage  
PAID  
SKOKIE, IL  
PERMIT NO. 238

\*\*\*\*\*ECRWSS\*\*\*\*\*  
TO: LOCAL RESIDENTS  
SKOKIE, IL



# CAMP OPEN HOUSE

Wednesday, January 25, 2017 • 6–7 p.m. • Oakton Community Center  
For more information call (847) 674-1500

Art • Theater • Nature • Swimming • Sports • Music • Circus • Trips • Camping • LEGO® • Teens & more



**Resident Camp Registration: Sunday, January 29, 12 p.m.**  
at Oakton Community Center, Devonshire Cultural Center, Emily Oaks Nature Center & Weber Leisure Center

**Non-resident Camp Registration: February 22**