



## Earth Education for School Groups

Emily Oaks Nature Center is your neighborhood oasis for earth education!

Choose from exciting learning adventures that motivate students to actively pursue the learning outcomes.

Activity goals include understanding basic ecological concepts, heightening feelings for the natural world, and crafting lifestyles that are more in harmony with the earth and its life.

To plan your next earth education outing, call Emily Oaks Nature Center at (847) 674-1500, ext. 2500.



Building Relationships with the Natural World

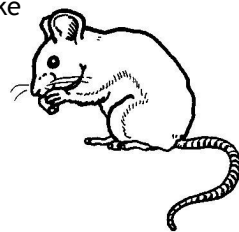
## PRE-SCHOOL & KINDERGARTEN

### Mousewalk

**Ages 3 & 4**

**3/4 hour**

Illinois Learning Standard: 12A  
Mice are nice, not frightening. With the help of a special “shrinking” whistle, you will be transformed into a mouse! Make a mouse house, find mouse food and hide from foxes just like real mice do in the woodland. *Two classes can be scheduled at the same time.*



### Time for Wonder

**Ages 4-5**

**1 hour**

Illinois Learning Standard: 12C  
Buzz! When the clock sounds, it is time to touch, see, hear or smell the wonders in the woodland. Guided by the Emily Oaks Timekeeper, you will participate in four fun activities designed to develop sensory awareness of the natural world. *Two classes can be scheduled at the same time.*

### Welcome to the Woodland

**Ages 4-5**

**1 hour**

Illinois Learning Standards: 12A & 12B  
Get to know this special place by visiting with our woodland puppet friends! Grasshopper, Tree, Squirrel and Wildflower are waiting to make your acquaintance and will help you explore their exciting home, the woodland. *Classes can be scheduled at 30-minute intervals.*



## FIRST GRADE

### What’s A Living Thing?

**Fall & Spring**

**1 1/2 hours**

Illinois Learning Standard: 12B  
Visit a banquet, listen to a “Breath-O-Meter” and chart the growth of plants and animals as you learn that all living things eat, breathe and grow! Participants will complete a “Living Things Checklist” and sing the “All Living Things” song as they explore the woodland in search of living things. *Classes can be scheduled at 30-minute intervals.*

### Earthwalk

**Fall & Spring**

**1 hour**

Illinois Learning Standard: 12C  
Reawaken your senses on an Earthwalk! Use Rainbow Chips to find incredible colors outdoors, share Prickly and Ticky touches with a friend, and Scratch ‘n Sniff the wonderful smells outdoors, among other activities. *Two classes can be scheduled at the same time.*

### Groundhog Day Celebration

**January–February**

**1 1/2 hours**

Illinois Learning Standard: 12A  
The legend of Groundhog Day is revealed when your class visits with a 5 ½ foot tall, talking groundhog! Indoors hear about Groundhog’s life story, then head outdoors to look for Groundhog’s burrow and to make your own predictions about the coming of spring. *Classes can be scheduled at 30-minute intervals.*

### The Energy Show

**Classroom Outreach**

**3/4 hour**

Illinois Learning Standards: 12C & 12E  
The Energy Dudes are coming! They’re seeping out of the thermostat, pouring out of the TV and floating out the open door. What a waste! This puppet show introduces the concept of energy consumption, encouraging students to Reduce-the-Use. Learn how to stop Energy Dudes from being wasted in your own home. Includes a 30-minute puppet show and application activity. *Class size is limited to 30 students per show.*

## The Way to Wonderland

**September–June**

Illinois Learning Standards: 12A, 12B, 12C & 13B  
Wonderland is a place where first and second graders can experience the wonders of the natural world while learning all about living things. This comprehensive earth education program helps students 1) build understandings about the needs of living things and the characteristics of plants and animals, 2) develop feelings for the natural world and 3) develop earth-sound lifestyle habits. Call Emily Oaks for a detailed program brochure.



## SECOND GRADE

### Sun, Seeds & Salads

**Fall**

**1 1/2 hours**

Illinois Learning Standard: 12A  
Learn all about roots, stems, leaves and seeds, and discover what plants need in order to grow. Sing the Plant Parts Song, play Plant Tag, give special gifts to Grandma and Grandpa Tree, and plant your own vegetable seeds! *Classes can be scheduled at 30-minute intervals.*



### Robin & the Recyclables

**Classroom Outreach**

**3/4 hour**

Illinois Learning Standard: 13B  
Help Robin learn what it means to be a “round-trip recyclable” in this entertaining puppet show. Learn what recyclables are, discover which things can actually be recycled, and follow each recyclable on its round-trip journey from the manufacturer all the way to the recycling bin and back again! Includes a 30-minute puppet show and application activity. *Class size is limited to 30 students per show.*

## Wind & Thundercloud

**Classroom Outreach**

**3/4 hour**

Illinois Learning Standard: 12E  
Meet Wind and Thundercloud as they clear the air about their roles in the amazing world of weather! Students will gain knowledge about how wind and thunderstorms are formed and learn how to be safe during threatening weather conditions. Includes a 20-minute performance and a 25-minute application activity. *Class size is limited to 30 students per show.*

### A Springtime Story

**Spring**

**1 1/4 hours**

Illinois Learning Standard: 12A  
Hear the story of Fledge, a baby Red-winged Blackbird. The adventure begins with the return of Fledge’s parents to the cattail marsh and ends with Fledge’s first flight from the nest! Fun games illustrate how birds find a mate, build a nest, and care for their young, bringing Fledge’s springtime story to life. *Classes can be scheduled at 30-minute intervals.*

## THIRD GRADE

### Keys to Life

**Fall & Spring**

**1 1/2 hours**

Illinois Learning Standard: 12E  
Life would not be possible without these four very important needs. See a giant drop of water, earn an oxygen ticket and take part in an incredible banquet as you learn about the Keys to Life! Only then can you unlock the special box that contains...? P.S. Remember to keep the “keys” a secret! *Two classes can be scheduled at the same time.*



(847) 674-1500, ext. 2500

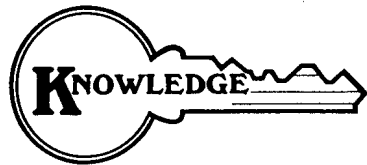
## FOURTH GRADE

### Earthkeepers

Fall 3 school days

Illinois Learning Standards: 12B, 12E & 13B

A non-residential earth education program, Earthkeepers helps students develop a personal relationship with the natural world while also teaching basic ecological concepts such as energy flow, cycles and interrelationships. To become Earthkeepers, students earn four keys representing Knowledge, Experience, Yourself and Sharing. Activities described under Fifth Grade are included in the complete Earthkeepers program. Call Emily Oaks for a detailed program brochure.



### Home Sweet Home

Fall & Spring 2 hours

Illinois Learning Standards: 11A & 12B

Assigned a plant or animal with a specific job and needs, you will set out with the Mayor to find a suitable community in which to live. But when the marsh changes into a field, some plants and animals must find new homes. A courtroom jury decides the fate of the Web-footed Bug Bagger and others! *Classes can be scheduled at 30-minute intervals.*

### A Pond Ecosystem

Fall & Spring 4 hours + lunch

Illinois Learning Standard: 13A

Take a rowboat out on the pond to measure pond depth and temperature! You will read through a field notebook written about Emily Pond by a pond biologist in 1940. Then perform some of the same tests that the pond biologist did 65 years ago to see if there is still a working pond ecosystem at Emily Oaks. Skokie/INVEST Schools Fee: \$6.00/student. *Classes can be scheduled at 30-minute intervals.*

## FIFTH GRADE

### Earthkeepers

Fall 3 school days

See program description under Fourth Grade.

### Munchline Monitors

Fall & Spring 1 1/4 hours

Illinois Learning Standard: 12B

The concept of energy flow comes to life at Mama Nature's Munch Room where Munchline Monitors in training follow the diminishing flow of sunlight energy through a food chain. Trainee tasks include discovering evidence of sun, plant and animal munchers, and assembling food chains found in Munch Bags. *Only one class can be scheduled at a time.*

### The Great Spec-tackle

Fall & Spring 1 1/2 hours

Illinois Learning Standard: 12E

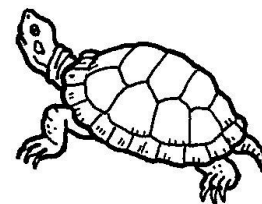
Inhale a speck of air that Michael Jordan breathed and pinch a speck of a dinosaur! At Speck Trail Junction, you will follow the journeys of representative specks (molecules) as they travel through the air, water and soil cycles and are used over and over again. *Only one class can be scheduled at a time.*

### Connection Inspection

Fall & Spring 1 1/2 hours

Illinois Learning Standard: 12B

The invisible interrelationships between living things are often hard to see. But by using a connection scope, you will be able to spot the complicated connections that support all life on earth. Then take on the role of a plant or animal and lock yourself into the amazing web of life, linking up to your needs for sun, soil, air and water! *Only one class can be scheduled at a time.*



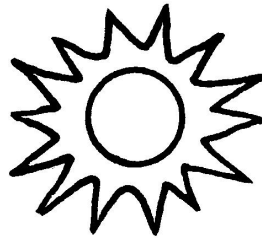
## SIXTH & SEVENTH GRADES

### Solarville

Fall & Spring 1 1/2 hours + lunch

Illinois Learning Standards: 12B & 12E

Journey from the sun to the earth where you'll meet Mario and Maria, the pizza makers of Solarville. While ordering your pizzas, you will



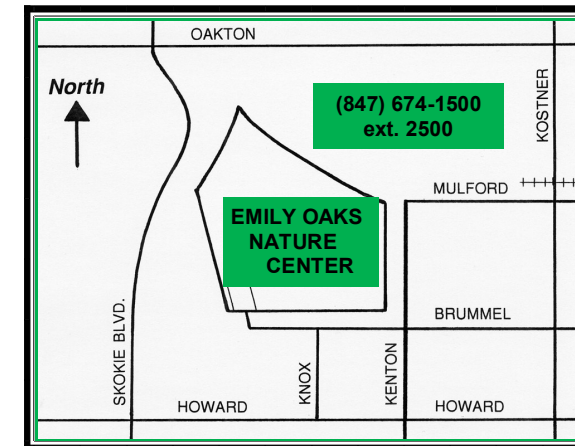
discover the hidden energy involved in food production and transportation, along with the fossil fuel reserves we use to provide that energy. Because sunlight energy is not taken for granted in Solarville, you must be prepared to pay for

the true energy costs of your pizza! There is a special fee for lunch.

*Only one class can be scheduled at a time.*



## DIRECTIONS



Emily Oaks Nature Center  
4650 Brummel Street  
Skokie IL 60076

(847) 674-1500, ext. 2500



## SCHEDULING

### Scheduling Your Visit

Reservations are required for all groups. Please make reservations no later than one week in advance of the desired activity date. To schedule an activity, call Emily Oaks Nature Center at (847) 674-1500, ext. 2500.

### Group Size & Fees

Group size is limited to 30 participants per activity. Minimum fees apply to groups of 10 students or less.

#### ON-SITE ACTIVITIES

Skokie/INVEST	Out-of-District
\$3.00/student	\$3.75/student

#### MINIMUM FEES

\$30.00/class	\$37.50/class
---------------	---------------

#### CLASSROOM OUTREACH ACTIVITIES

Skokie/INVEST	Out-of-District
\$65/show	\$80/show

#### EARTHKEEPERS PROGRAM

Skokie/INVEST	Out-of-District
\$45/student	\$56/student

#### WONDERLAND PROGRAM

Skokie/INVEST	Out-of-District
\$30/student	\$38/student

### In the Event of Rain...

Please note that all on-site activities take place outdoors, and no alternative indoor activities are available in the event of rain or inclement weather. We will do our best to reschedule your visit should you need to cancel due to weather.

### Picnicking

Picnicking is not permitted within the Nature Center, though groups may eat lunch at tables located in the playground.

### Loaner Video

Please call for a loaner copy of the 12-minute video highlighting our Earth Education programming and featuring actual footage of students as well as comments from teachers.